

 **katena**
DESIGNED FOR SIGHT®

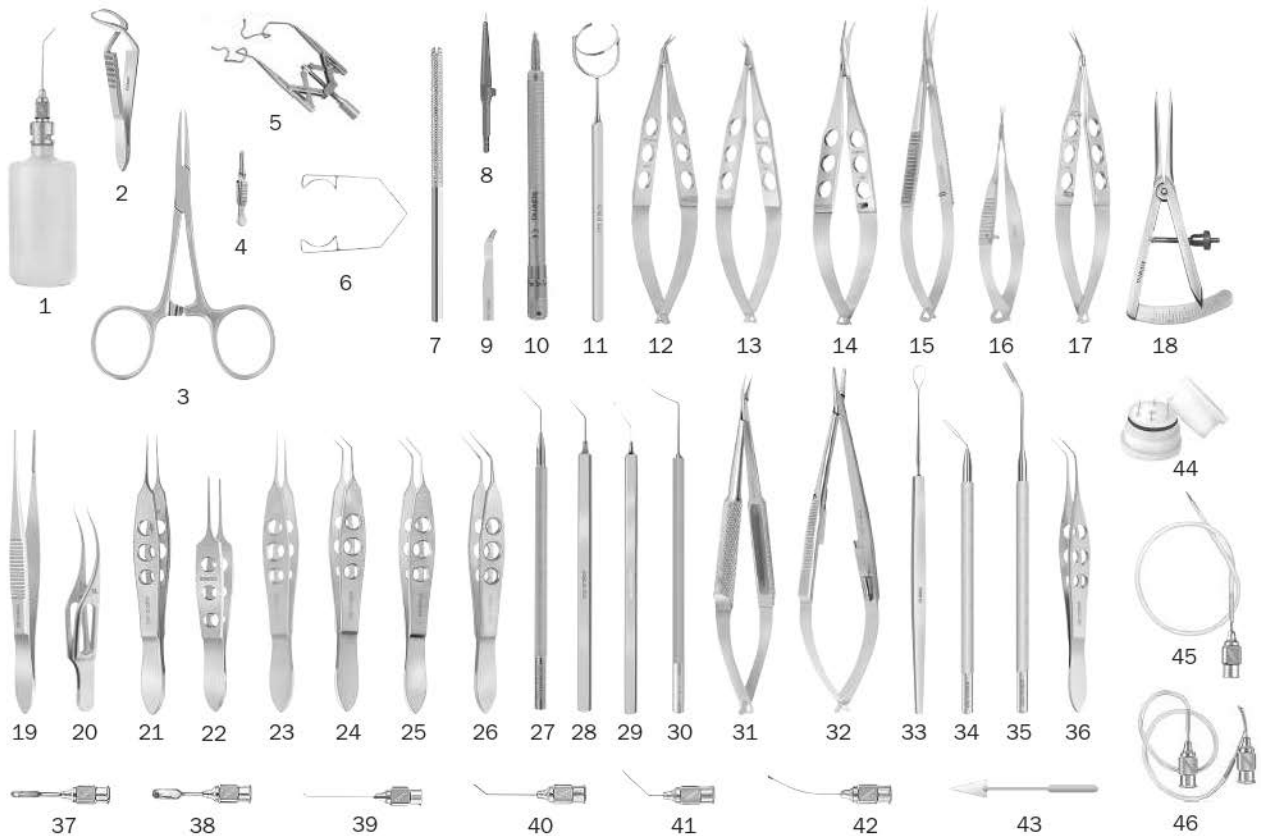
INSTRUMENTS
BIOLOGICS
DEVICES



Suggested Instrument Sets - Table of Contents

Instrument Sets	Page Number
K10-2010 PLANNED EXTRA-CAPSULAR CATARACT EXTRACTION	212
K10-1011 FEMTO CATARACT SET	213
K10-1012 CHANG CONTINGENCY SET	214
K10-1013 IOL EXPLANTATION SET	215
K10-1014 MICRO IOL REMOVAL SET	216
K10-2015 EXTRA-CAPSULAR CATARACT EXTRACTION SET (PHACOEMULSIFICATION)	217
K10-2016 PHACO PRECHOP SET	218
K10-1017 MICRO INCISION CATARACT SURGERY (MICS) SET	219
K10-1020 MANUAL PHACOFRACTURE CATARACT EXTRACTION SET	220
K10-1021 MANUAL SMALL INCISION CATARACT SURGERY (MSICS) SET	221
K10-2022 LIMBAL RELAXING INCISION SET	222
K10-2023 TORIC IOL SET	223
K10-2025 GLAUCOMA SET	224
K10-2030 CORNEAL TRANSPLANT SET	225
K10-2032 DEEP ANTERIOR LAMELLAR KERATOPLASTY (DALK) SET	226
K10-2033 ENDOTHELIAL TRANSPLANTATION SET	227
K10-2035 LASIK SET	228
K10-2036 FEMTOSECOND LASIK SET	229
K10-1037 LASEK SET	230
K10-1040 LID SET	231
K10-1043 OCULOPLASTIC SET	232
K10-1045 CHALAZION SET	233
K10-2050 STRABISMUS SET	234
K10-1055 LACRIMAL SET	235
K10-1060 VITREORETINAL SET	236
K10-1065 ENUCLEATION SET	237
K10-1070 PTERYGIUM SET	238
K10-1080 OFFICE SET	239
K10-1090 VETERINARY OPHTHALMIC SET	240

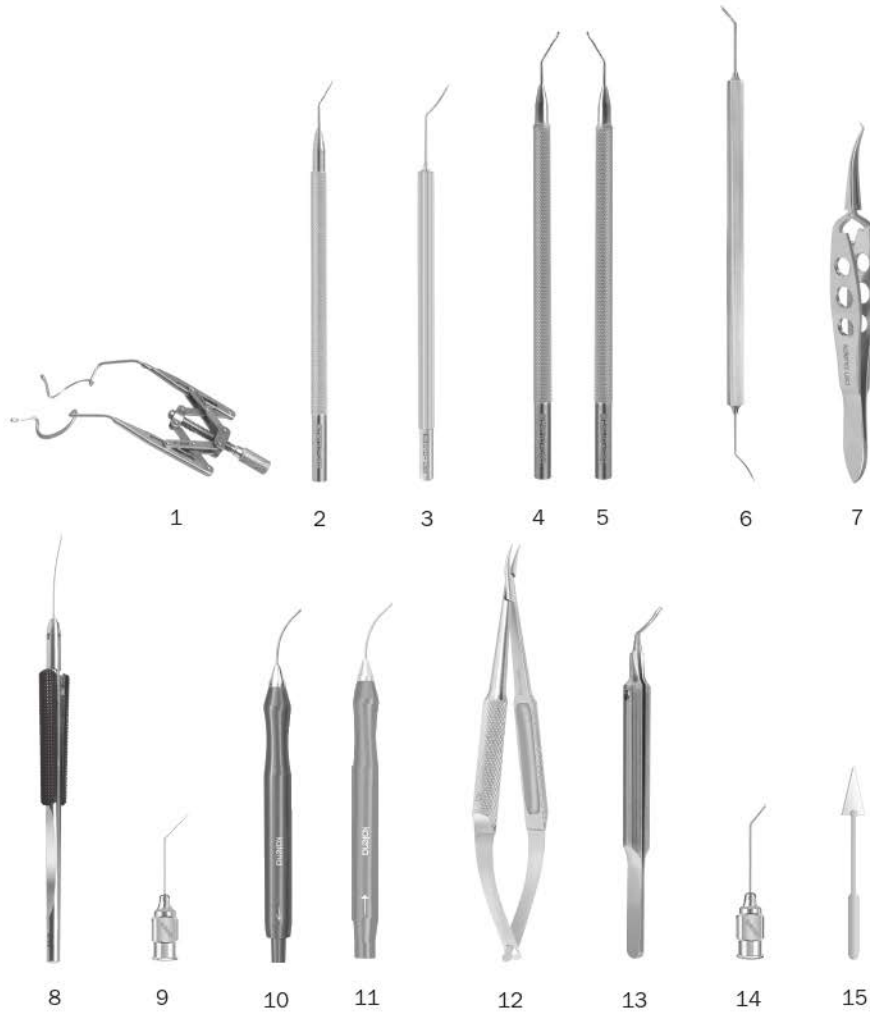
Cataract Set



K10-2010 • PLANNED EXTRA-CAPSULAR CATARACT EXTRACTION

- | | | | |
|--------------------|--|---------------------|--|
| 1. K7-5000 | Bishop-Harmon A/C Irrigator | 25. K5-5030 | Kelman-McPherson Forceps |
| 2. K5-9960 | Jones Towel Clamp | 26. K5-5081 | Utrata Capsulorrhexis Forceps |
| 3. K5-9900 | Hartmann Mosquito Forceps, straight | 27. K3-2329 | Nagahara Phaco Chopper |
| 4. K5-9850 | Serrefine, small, straight | 28. K3-5230 | Sinsky II Lens Hook, angled |
| 5. K1-5691 | Double-X Speculum, K-wire, 15mm | 29. K3-5520 | Kuglen Iris Hook, angled |
| 6. K1-5010 | Barraquer Wire Speculum, large | 30. K3-2300 | Barraquer Iris Spatula |
| 7. K20-1910 | Chuck Handle (2) | 31. K6-3310 | Barraquer Needle Holder, curved |
| 8. K20-2442 | Super Sharp Blade, 15 deg. (bx) | 32. K6-1560 | Castroviejo Needle Holder, straight |
| 9. K20-2466 | Lamellar Blade #66 (bx) | 33. K3-4010 | Lewis Lens Loop |
| 10. K2-6540 | Diamond Step Knife | 34. K3-4145 | Alfonso Trisector, oval |
| 11. K3-6161 | Fine-Thornton Fixation Ring, 13mm | 35. K3-4156 | Alfonso Cutting Platform |
| 12. K4-1000 | Castroviejo Corneal Scissors, small, right | 36. K5-7253 | Alfonso Nucleus Forceps |
| 13. K4-1010 | Castroviejo Corneal Scissors, small, left | 37. K7-5532 | Alfonso-McIntyre Irrigating Spoon, small |
| 14. K4-3004 | Westcott Tenotomy Scissors | 38. K7-5533 | Alfonso-McIntyre Irrigating Spoon, large |
| 15. K4-4100 | Westcott Stitch Scissors | 39. K7-5241 | Anis Cortex Aspiration Cannula |
| 16. K4-5010 | Vannas Scissors, curved | 40. K7-3520 | Air Injection Cannula, 27ga. |
| 17. K4-5122 | Stern-Gills Scissors | 41. K7-5150 | McIntyre A/C Cannula, 26ga. |
| 18. K3-9000 | Castroviejo Caliper | 42. K7-4931 | Jensen Polisher, 23ga. |
| 19. K5-6200 | Bonaccolto Conjunctiva Forceps | 43. K20-5000 | K-Sponge Spears (bx) |
| 20. K5-1520 | Harms-Colibri Forceps, 0.12mm | 44. K3-4970 | Iris Retractors, (set of 6) in case |
| 21. K5-2020 | Bonn Forceps, 0.12mm | 45. K7-6715 | Brierley Chamber Maintainer |
| 22. K5-3510 | Bishop-Harmon Forceps | 46. K7-4300 | Simcoe I/A Cannula, curved |
| 23. K5-5000 | McPherson Tying Forceps, straight | 47. *K9-2350 | Sterilizing Case, double, aluminum |
| 24. K5-5010 | McPherson Tying Forceps, angled | | *not shown |

Femto Cataract Set

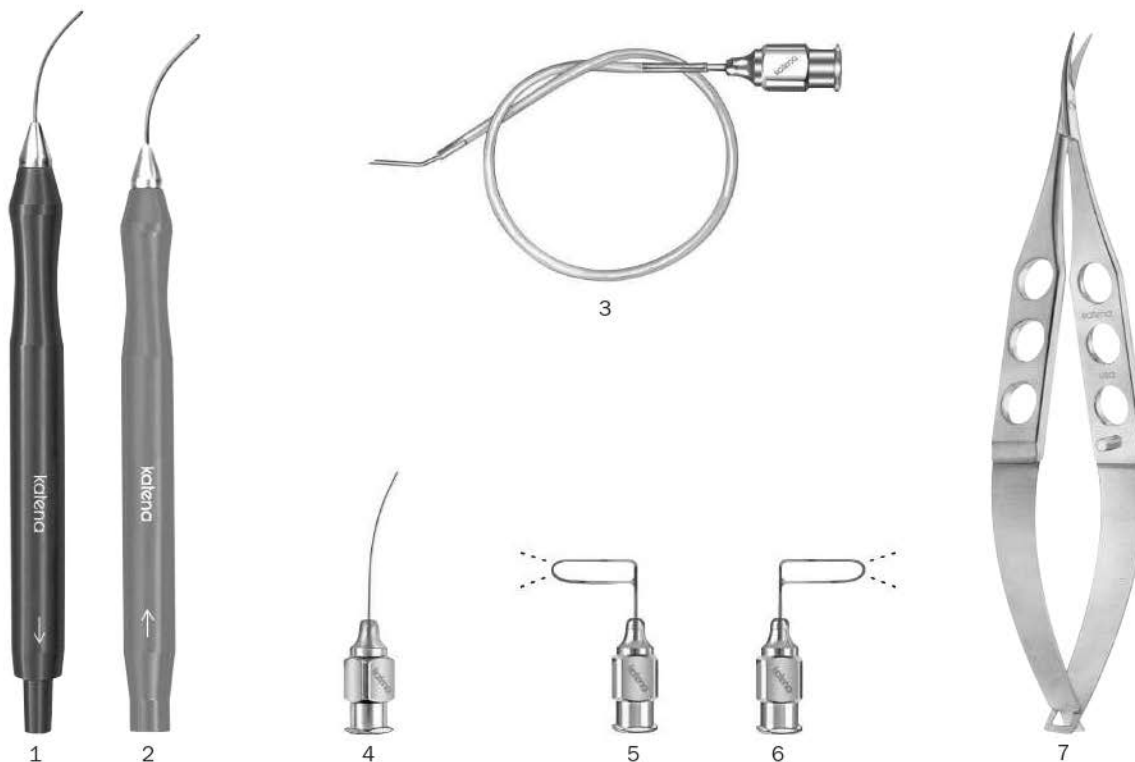


K10-1011 • FEMTO CATARACT SET

- | | |
|---|---|
| 1. K1-5697 Double-X Speculum, 13mm blades | 9. K7-5085 Chu Hydrodissection Cannula, 25ga. |
| 2. K3-2440 Donnenfeld Femto Spatula, spear tip | 10. K7-5811 Aspiration Handpiece, 21ga. with texture |
| 3. K3-2442 Katena Femto Spatula, blunt tip | 11. K7-5840 Irrigation Handpiece, 21ga. dual 0.5 ports |
| 4. K3-2450 Donnenfeld Femto Splitter, right | 12. K6-3310 Barraquer Needle Holder, curved |
| 5. K3-2451 Donnenfeld Femto Splitter, left | 13. K5-5090 Giannetti MICS Capsulorhexis Forceps |
| 6. K3-2460 Katena Femto Spatula, D-E | 14. K7-3520 Air Injection Cannula, 27ga. |
| 7. K5-7245 Hu Femto Forceps | 15. K20-5000 K-Sponge Spears (bx) |
| 8. K5-7270 Femto Nucleus Forceps, 22ga. | 16. *K9-2340 Sterilizing Case, large, aluminum |

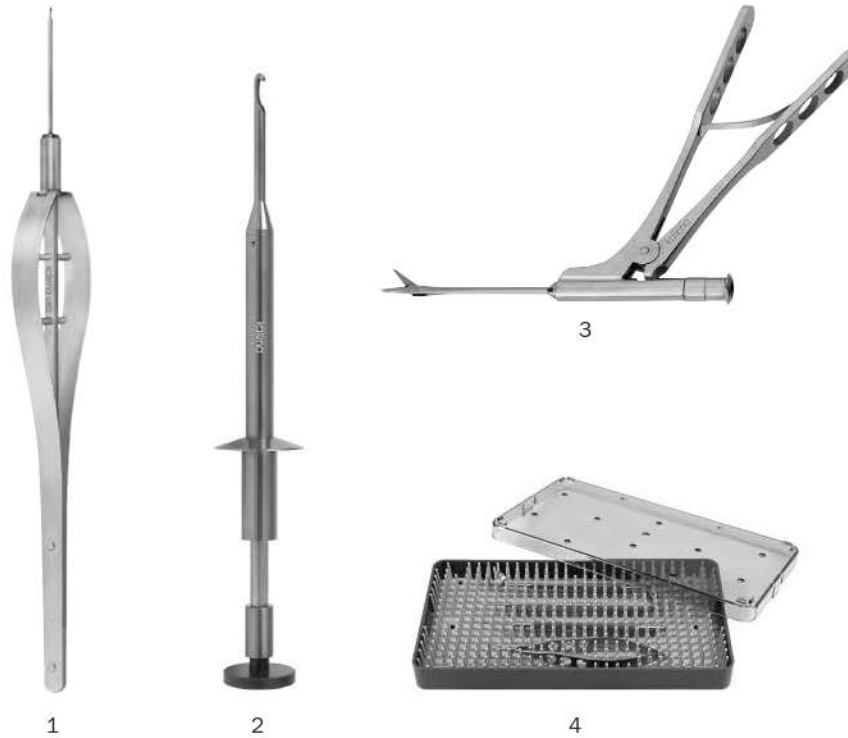
*not shown

Contingency Set



K10-1012 • CHANG CONTINGENCY SET

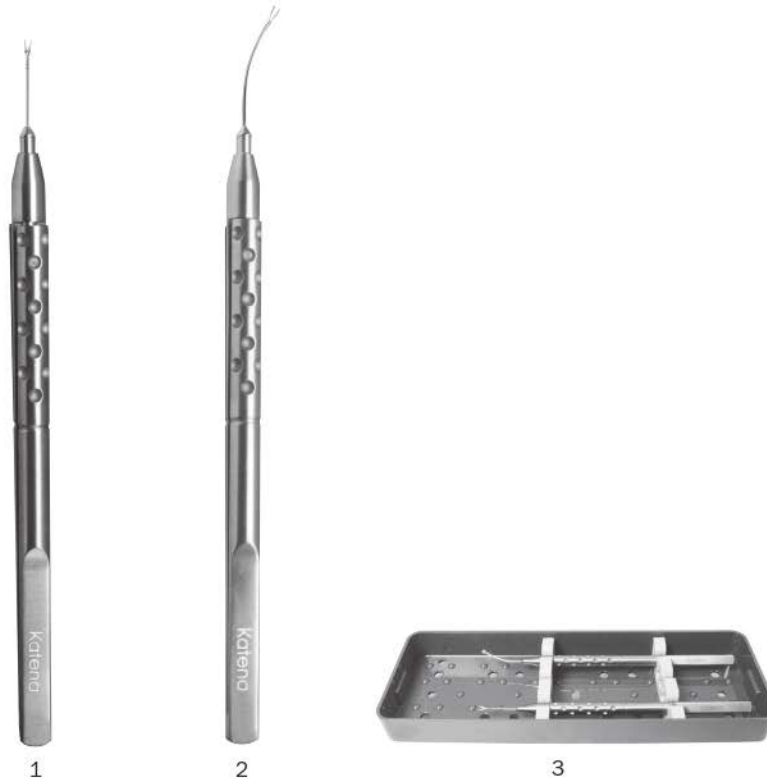
1. **K7-5811** Aspiration Handpiece, 21 gauge, 0.35mm port, textured tip
 2. **K7-5840** Irrigation Handpiece, 21 gauge, dual 0.5mm ports
 3. **K7-6711** Infusion Cannula, 22 gauge, self retaining tip, with tubing and adaptor
 4. **K7-4008** Corbin Sub-Tenon's Cannula, 0.3 side port, 23 gauge
 5. **K7-5530** Simcoe Irrigating Lens Loop, two front ports, 25 gauge, right
 6. **K7-5531** Simcoe Irrigating Lens Loop, two front ports, 25 gauge, left
 7. **K4-2220** Castroviejo Corneal Scissors, curved, blunt tips, medium blades
 8. ***K9-2025** Sterilizing Case, medium, plastic
- * not shown



K10-1013 • IOL EXPLANTATION SET

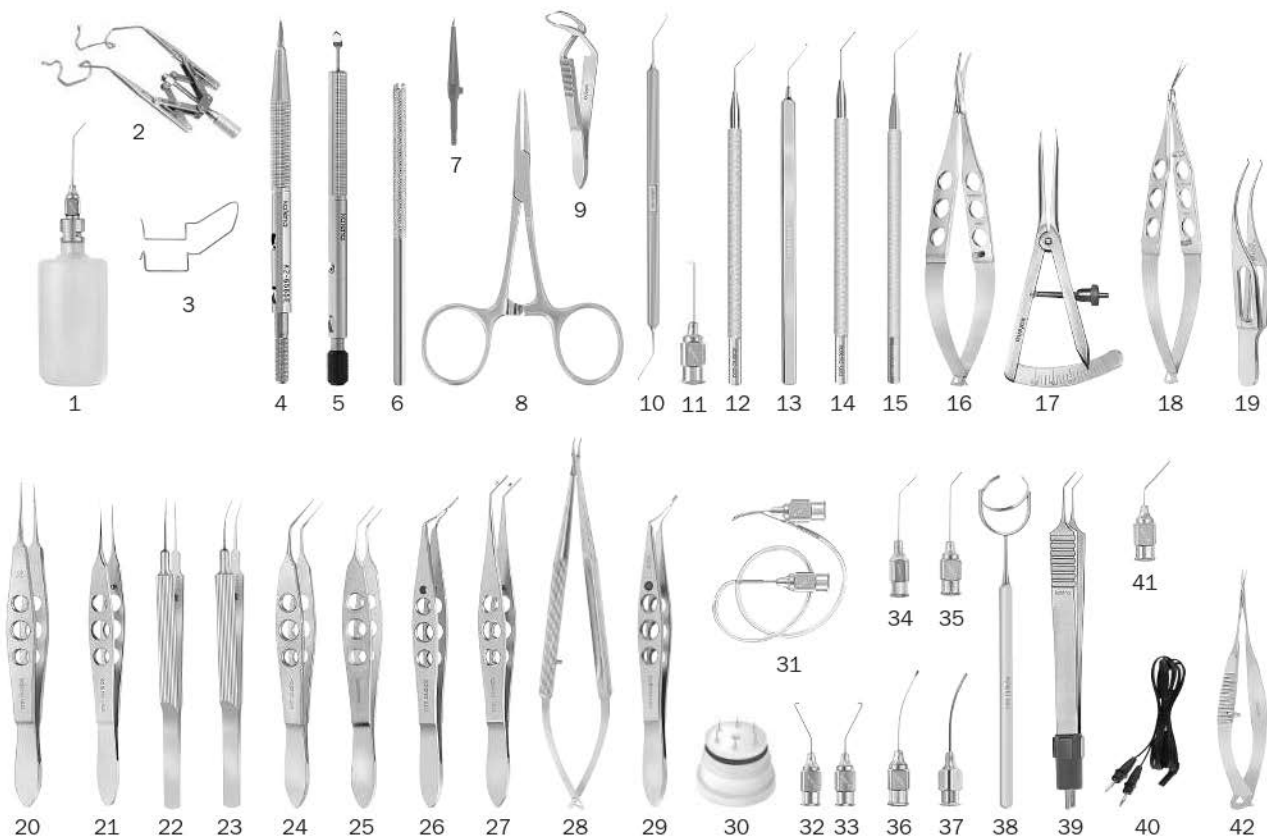
1. **K4-5550** Scimeca Haptic Cutter
2. **K4-5565** Stolte IOL Cutter, titanium
3. **K4-5571** Katena IOL Cutter
4. **K9-2025** Sterilization Case, medium, plastic

Micro IOL Removal Set



K10-1014 • DONNENFELD MICRO IOL REMOVAL SET

1. **K4-5560** Donnenfeld Micro Soft IOL Cutter
2. **K5-7570** Donnenfeld Micro IOL Holding Forceps
3. **K9-2024** Sterilizing Case, plastic, 3-instruments

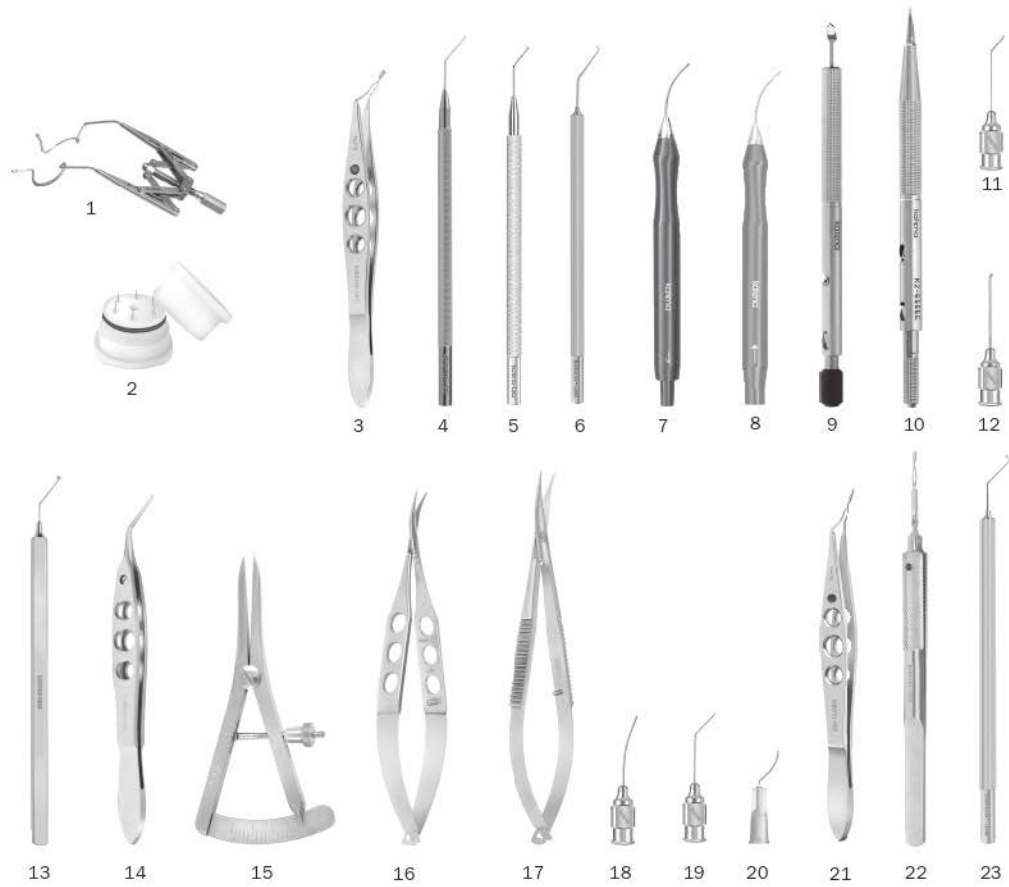


K10-2015 • EXTRA-CAPSULAR CATARACT EXTRACTION USING PHACOEMULSIFICATION SET

- | | | | |
|--------------------|--------------------------------------|----------------------|--------------------------------------|
| 1. K7-5000 | Bishop-Harmon A/C Irrigator | 23. K5-5230 | Tennant Tying Forceps, curved |
| 2. K1-5695 | Double-X Speculum, V-Wire, 15mm | 24. K5-5081 | Utrata Capsulorrhexis Forceps |
| 3. K1-5015 | Temporal Speculum, open wire | 25. K5-5030 | Kelman-McPherson Forceps, angled |
| 4. K2-6565 | Diamond Knife, tri-facet | 26. K5-8228 | Ernest-McDonald IOL Inserter |
| 5. K2-6605 | Phaco-4 Diamond Knife, 2.8mm, angled | 27. K5-8215 | Livernois IOL Folder |
| 6. K20-1910 | Chuck Handle | 28. K6-3820 | Katena Needle Holder, curved, w/lock |
| 7. K20-2442 | Super Sharp Blade, 15 deg. (bx) | 29. K5-7240 | Ernest Nucleus Cracker |
| 8. K5-9900 | Hartmann Mosquito Forceps, str. | 30. K3-4970 | Iris Retractors, (set 6) in case |
| 9. K5-9960 | Jones Towel Clamp | 31. K7-4300 | Simcoe I/A Cannula, curved |
| 10. K3-2369 | Chang Combination Chopper, left | 32. K7-5440 | McIntyre-Binkhorst Cannula, right |
| 11. K7-5464 | Chang Hydrodissection Cannula, 27ga. | 33. K7-5450 | McIntyre-Binkhorst Cannula, left |
| 12. K3-2395 | Rosen Phaco Splitter | 34. K7-5054 | Hydrodissection Cannula, 25ga. |
| 13. K3-5520 | Kuglen Iris Hook, angled | 35. K7-3520 | Air Injection Cannula, 27ga. |
| 14. K3-2410 | Jaffe-Bechert Rotator, 9mm | 36. K7-4931 | Jensen Polisher, 23ga. |
| 15. K3-2690 | Lester IOL Manipulator, angled | 37. K7-4005 | Stevens Sub-Tenon's Cannula, 19ga. |
| 16. K4-3004 | Westcott Tenotomy Scissors | 38. K3-6161 | Fine-Thornton Fixation Ring, 13mm |
| 17. K3-9000 | Castroviejo Caliper, straight | 39. K8-7021 | Bipolar Forceps, angled, blunt |
| 18. K4-5122 | Stern-Gills Scissors | 40. K8-7065 | Bipolar Cord |
| 19. K5-1500 | Colibri Forceps, 0.12mm teeth | 41. K7-4680 | McIntyre Reverse Cystotome |
| 20. K5-2500 | Castroviejo Forceps, 0.12mm | 42. K4-5010 | Vannas Scissors, curved |
| 21. K5-1820 | Fechtner Conjunctiva Forceps | 43.* K20-5000 | K-Sponge Spears |
| 22. K5-5220 | Tennant Tying Forceps, straight | 44.* K9-2350 | Sterilizing Case, double, aluminum |

*not shown

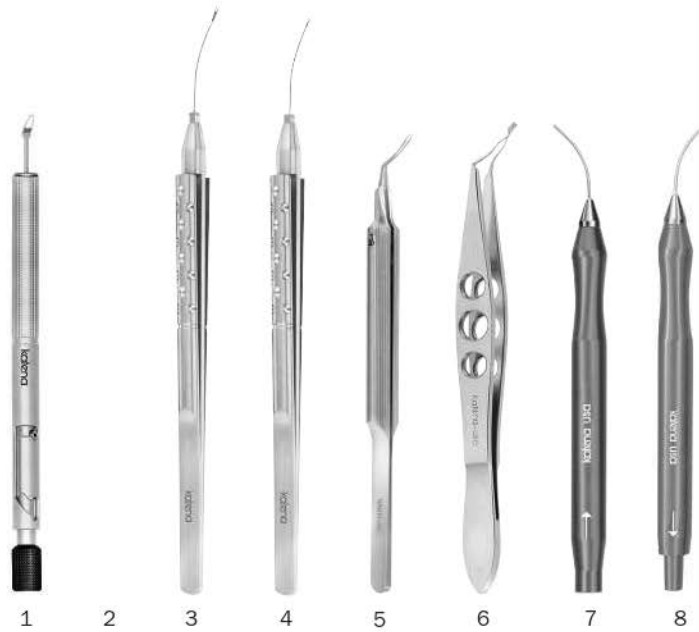
Phaco Prechop Set



K10-2016 • PHACO PRECHOP SET

- | | |
|--|--|
| 1. K1-5697 Double-X Speculum, 13mm blades | 13. K3-5520 Kuglen Hook, angled |
| 2. K3-4970 Iris Retractors (set 6) in case | 14. K5-5091 Utrata MICS Capsulorrhexis Forceps |
| 3. K5-7242 Ernest Micro Nucleus Cracker | 15. K3-9000 Castroviejo Caliper, straight |
| 4. K3-5233 Sinsky II Lens Manipulator | 16. K4-3004 Westcott Tenotomy Scissors |
| 5. K3-2410 Jaffe-Bechert Nucleus Rotator | 17. K4-4100 Westcott Stitch Scissors |
| 6. K3-2383 Dodick-Kammann Chopper 1.5mm, angled (x2) | 18. K7-5082 Sauter Hydrodissection Cannula, 27ga. |
| 7. K7-5811 Aspiration Handpiece, 21ga. w/ textured tip | 19. K7-5054 Hydrodissection Cannula, 25ga. |
| 8. K7-5840 Irrigation Handpiece, 21ga. dual 0.5mm sideports | 20. K20-3066 Cystotome, formed, 25ga. (bx/10) |
| 9. K2-6605 Phaco-4 Diamond Knife, 2.8mm, angled | 21. K5-7230 Akahoshi Phaco PreChopper |
| 10. K2-6565 Diamond Knife, tri-facet, 1mm | 22. K5-7232 Akahoshi Combo PreChopper |
| 11. K7-3500 Air Injection Cannula, 30ga. | 23. K3-2357 Akahoshi Nucleus Sustainer |
| 12. K7-4900 Kratz Scratcher, 22ga. | 24. *K9-2340 Instrument Case, large, aluminum |

* not shown

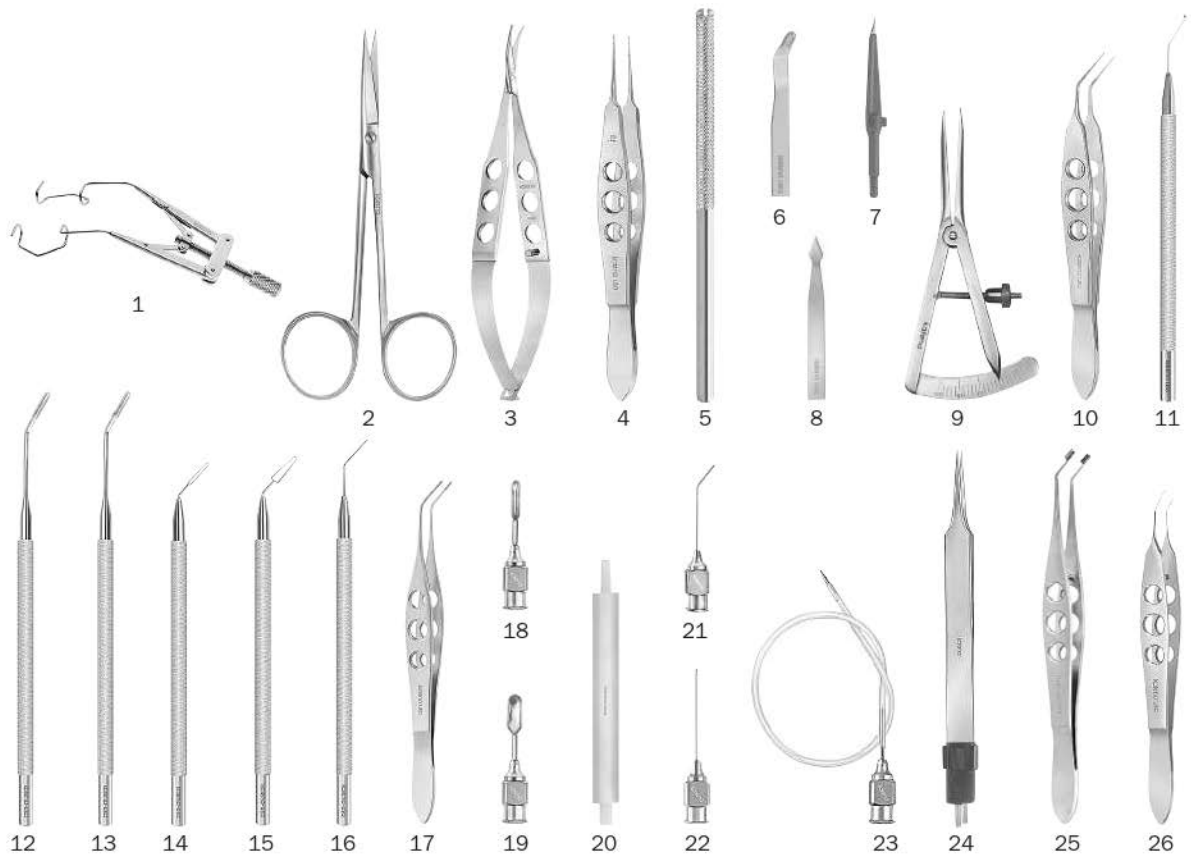


K10-1017 • MICRO INCISION CATARACT SURGERY (MICS) SET

1. **K2-6622** MICS Diamond Knife Trapezoid, 1.8/2.2mm
2. **K3-2697** Alio-Kelman IOL Hook
3. **K4-5351** Alio MICS Scissors, 23ga.
4. **K5-7651** Alio MICS Capsulorhexis Forceps, 23ga.
5. **K5-5090** Giannetti MICS Capsulorhexis Forceps
6. **K5-7242** Ernest Micro Nucleus Cracker
7. **K7-5836** Irrigating Handpiece, 23ga., dual 0.3mm ports
8. **K7-5805** Aspirating Handpiece, 0.3mm, with textured tip
9. ***K9-2330** Instrument Case, medium, aluminum

* not shown

PhacoFracture Cataract Set



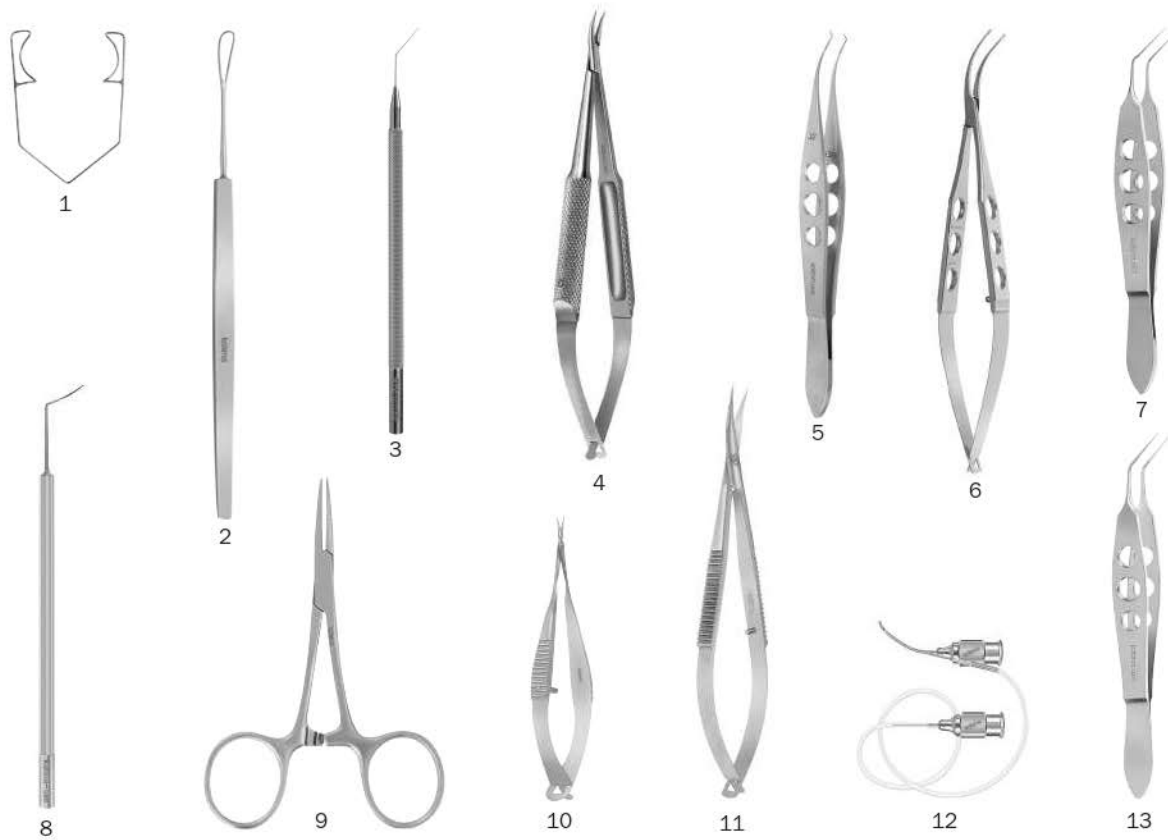
K10-1020 • MANUAL PHACOFRACTURE CATARACT EXTRACTION SET

as used by Eduardo Alfonso, M.D.

- | | | | |
|--------------------|-------------------------------------|---------------------|--|
| 1. K1-5675 | Lieberman Speculum, V-wire | 15. K3-4146 | Bucher-Kansas Nucleus Trisector |
| 2. K4-7400 | Eye Scissors, straight | 16. K3-4150 | Kansas Nucleus Bisector |
| 3. K4-3004 | Westcott Tenotomy Scissors | 17. K5-7253 | Alfonso Nucleus Forceps, 3x4 teeth |
| 4. K5-2500 | Castroviejo Forceps, 0.12mm | 18. K7-5532 | Alfonso-McIntyre Irrigating Spoon, small |
| 5. K20-1910 | Chuck Handle (3) | 19. K7-5533 | Alfonso-McIntyre Irrigating Spoon, large |
| 6. K20-2466 | Performance Lamellar Blade #66 (bx) | 20. K7-6750 | McIntyre Infusion Handle |
| 7. K20-2442 | Performance Super Sharp Blade (bx) | 21. K7-3522 | Air Injection Cannula, 27ga. |
| 8. K20-2476 | Performance Phaco Blade (bx) | 22. K7-5240 | Anis Cortex Aspirating Cannula, straight |
| 9. K3-9000 | Castroviejo Caliper, straight | 23. K7-6715 | Brierley Chamber Maintainer |
| 10. K5-5081 | Utrata Capsulorrhexis Forceps | 24. K8-7012 | Bipolar Forceps, straight, pointed |
| 11. K3-5523 | Kuglen Lens Manipulator, angled | 25. K5-8210 | Dodick IOL Folding Forceps |
| 12. K3-4156 | Alfonso Cutting Platform, 2mm | 26. K5-8268 | Buratto Soft IOL Inserter |
| 13. K3-4157 | Alfonso Cutting Platform, 3mm | 27. *K7-6748 | Silicone Tubing w/adaptor for K7-6750 |
| 14. K3-4145 | Alfonso Nucleus Trisector, oval | 28. *K9-2040 | Sterilizing Case, double, plastic |

* not shown

Technique Video Available



K10-1021 • MANUAL SMALL INCISION CATARACT SURGERY (MSICS) SET
as used by Glenn Strauss, M.D.

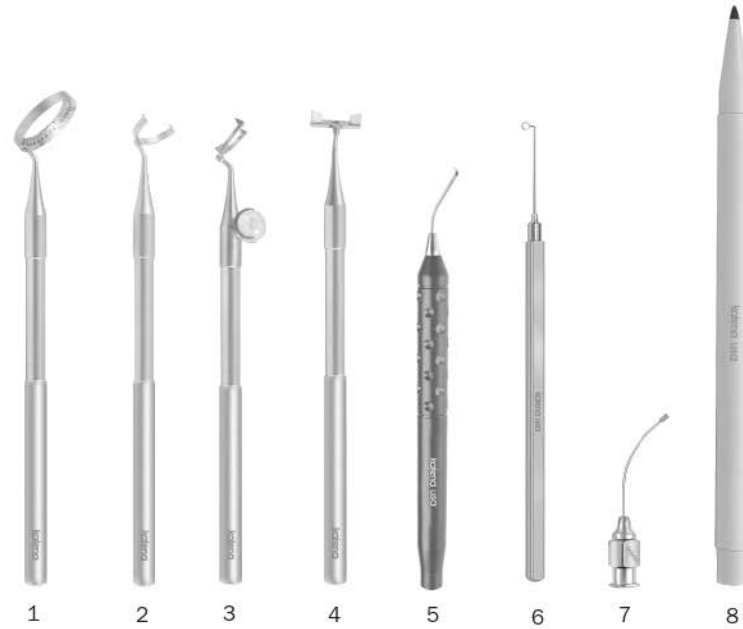
- | | | | |
|--------------------|---|---------------------|-------------------------------------|
| 1. K1-5010 | Barraquer Wire Speculum, large | 8. K3-2300 | Barraquer Iris Spatula, 0.5mm |
| 2. K3-4100 | Wilder Lens Loop, serrated | 9. K5-9900 | Hartmann Mosquito Forceps, straight |
| 3. K3-5233 | Sinskey II Lens Hook, angled | 10. K4-5000 | Vannas Scissors, straight |
| 4. KT6-3310 | Barraquer Needle Holder, curved, titanium | 11. K4-4100 | Westcott Stitch Scissors |
| 5. K5-1902 | Harms-Colibri Forceps, 0.12mm curved | 12. K7-4320 | Strauss-Simcoe I/A Cannula |
| 6. K5-8600 | Shepard Lens Forceps | 13. K5-5081 | Utrata Capsulorrhexis Forceps |
| 7. K5-5050 | Gaskin Fragment Forceps, angled | 14. *K9-2330 | Sterilizing Case, medium, aluminum |
| | | | * not shown |



K10-2022 • LIMBAL RELAXING INCISION SET

1. **K2-6519** LRI Step Knife, 3 Steps (0.5, 0.55, 0.6mm)
2. **K5-7245** Hu Femto Forceps
3. **K3-7908** Henderson Alignment Marker
4. **K3-7906** Alignment Marker with Bubble
5. **K3-7904** Henderson Degree Gauge
6. **K3-7936** Henderson Limbal Relaxing Incision Marker
7. **K3-7930** Chu Limbal Relaxing Incision Marker
8. **K20-4500** Marking Pen, sterile, disposable (pk/10)
9. ***K9-2320** Instrument Case, small, aluminum

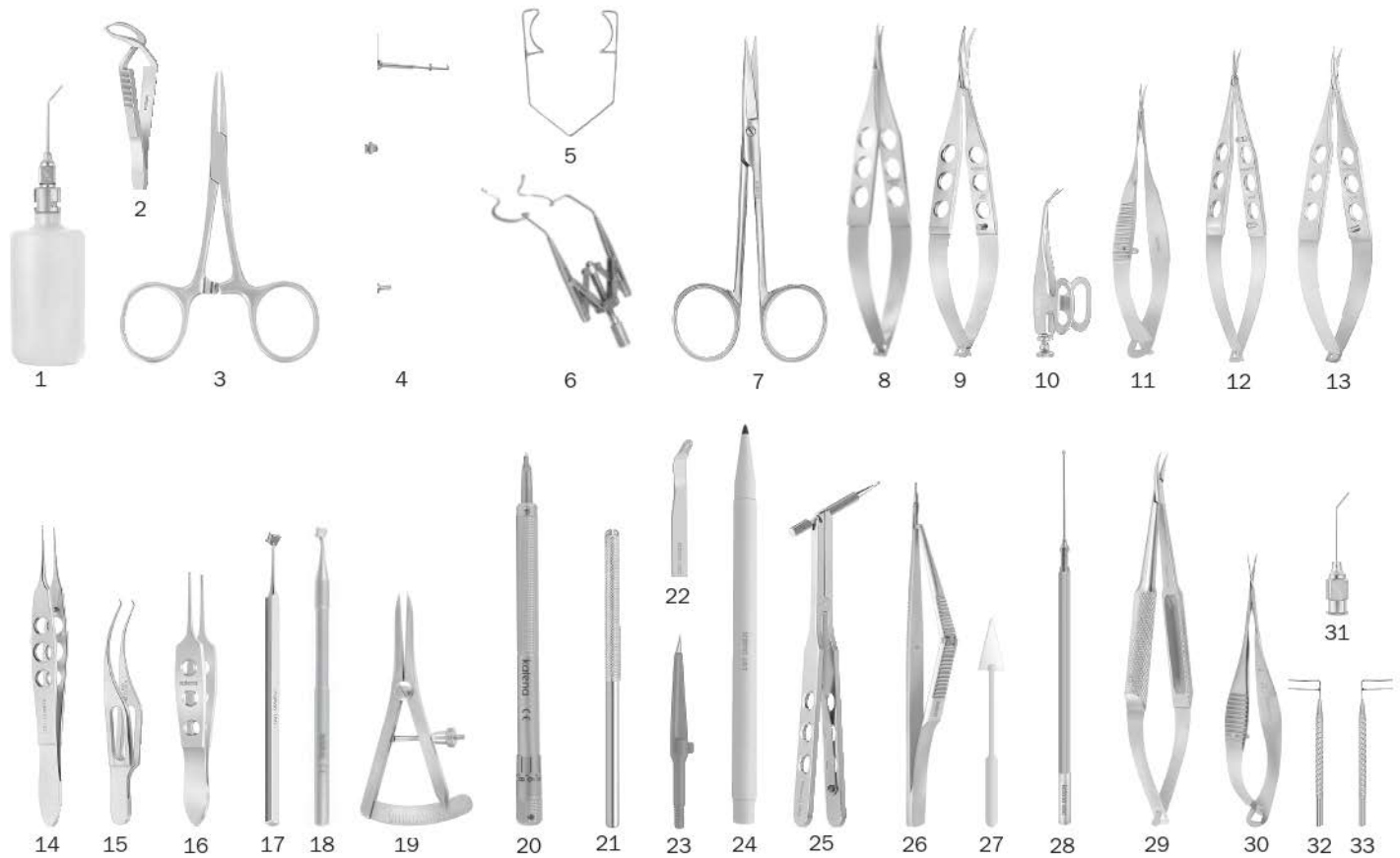
* not shown



K10-2023 • TORIC IOL SET

1. **K3-7904** Henderson Degree Gauge
 2. **K3-7908** Henderson Alignment Marker
 3. **K3-7906** Alignment Marker with Bubble
 4. **K3-7912** Henderson Toric IOL Marker
 5. **K7-5780** Lu Irrigating Toric Lens Manipulator
 6. **K3-1105** Scorsetti-Shepherd Capsule Polisher, 90°
 7. **K7-4890** Henderson MICS Capsule Polisher
 8. **K20-4500** Marking Pen, sterile, disposable (pk/10)
 9. ***K9-2025** Sterilizing Case, medium, plastic
- * not shown

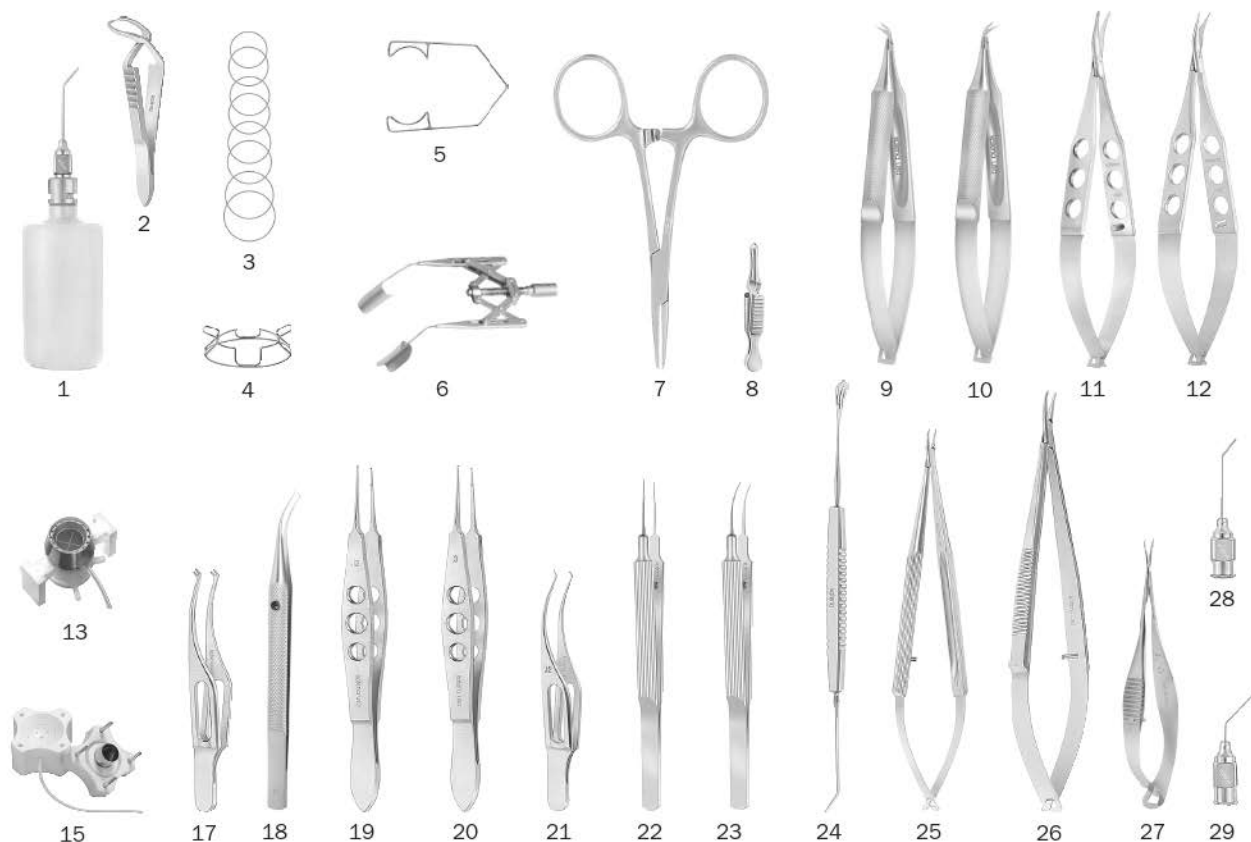
Glaucoma Set



K10-2025 • GLAUCOMA SET

- | | | | |
|--------------------|---|---------------------|--|
| 1. K7-5000 | Bishop-Harmon A/C Irrigator | 18. K3-8977 | Fechtner EX-PRESS® Marker |
| 2. K5-9960 | Jones Towel Clamp | 19. K3-9000 | Castroviejo Caliper, straight |
| 3. K5-9900 | Hartmann Mosquito Forceps, straight | 20. K2-6548 | Diamond Step Knife, 10-facet |
| 4. K1-5955 | Schott Eye Speculum, adjustable | 21. K20-1910 | Chuck Handle (2) |
| 5. K1-5010 | Barraquer Wire Speculum, large | 22. K20-2466 | Lamellar Blade #66 (bx) |
| 6. K1-5697 | Double-X Speculum, 13mm blades | 23. K20-2442 | Super Sharp Blade, 15 deg. (bx) |
| 7. K4-7400 | Eye Scissors, straight | 24. K20-4500 | Marking Pen, sterile, disposable (pk/10) |
| 8. K4-3002 | Sarkisian-Westcott Scissors, small blades | 25. K2-9505 | Luntz-Dodick Trabeculectomy Punch |
| 9. K4-3004 | Westcott Tenotomy Scissors | 26. K2-9510 | Kelly Descemet's Membrane Punch |
| 10. K4-4900 | Barraquer Iris Scissors | 27. K20-5000 | K-Sponge Spears |
| 11. K4-3200 | Mini Westcott Scissors | 28. K3-1124 | Blumenthal Conjunctiva Dissector |
| 12. K4-5111 | Katena-Vannas Scissors, 7mm, curved | 29. K6-3310 | Barraquer Needle Holder, curved |
| 13. K4-4000 | McPherson-Westcott Stitch Scissors | 30. K4-4200 | Katena Micro Tying Scissors |
| 14. K5-1820 | Fechtner Conjunctiva Forceps (2) | 31. K7-3520 | Air Injection Cannula, 27ga. |
| 15. K5-1500 | Colibri Forceps, 0.12mm teeth | 32. K7-1000 | Harms Trabeculotomy Probe, right |
| 16. K5-3510 | Bishop-Harmon Forceps | 33. K7-1010 | Harms Trabeculotomy Probe, left |
| 17. K3-8975 | Fechtner Trabeculectomy Marker | 34. *K9-2350 | Sterilizing Case, double, aluminum |

* not shown

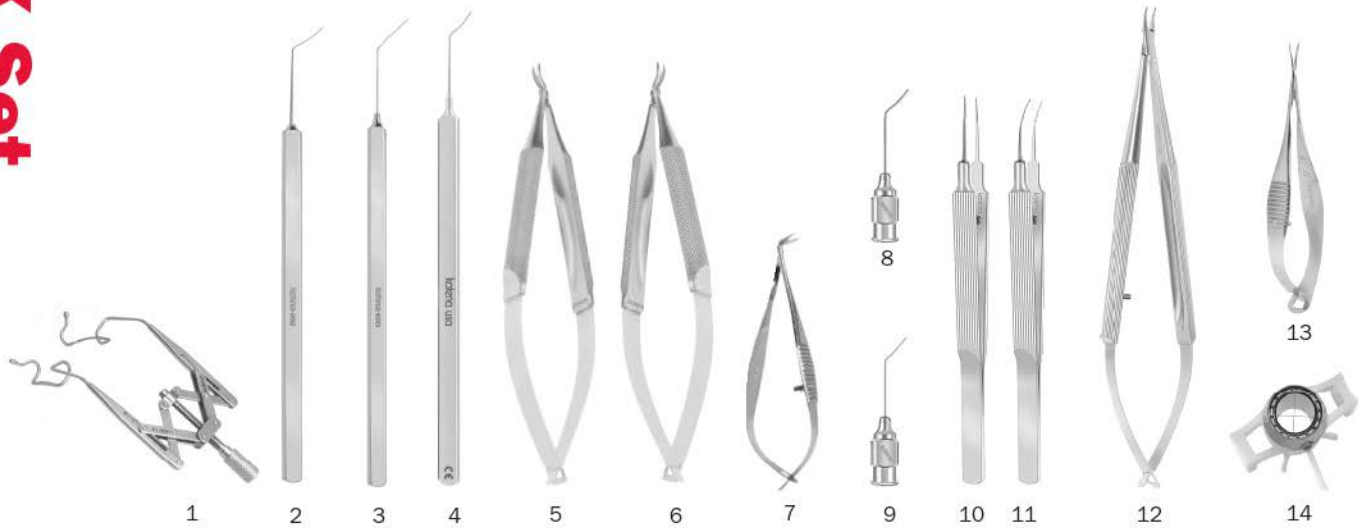


K10-2030 • CORNEAL TRANSPLANT SET

- | | |
|---|---|
| 1. K7-5000 Bishop-Harmon A/C Irrigator | 17. K5-1560 Polack Double Corneal Fixation Forceps |
| 2. K5-9960 Jones Towel Clamp | 18. K5-2914 Perl Comeal Forceps, 0.08mm, left |
| 3. K1-7100 Flieringa Rings (set of 8) | 19. K5-2500 Castroviejo Forceps, 0.12mm |
| 4. K1-7312 McNeill-Goldman Fixation Ring | 20. K5-2510 Castroviejo Forceps, 0.3mm |
| 5. K1-5010 Barraquer Wire Speculum, large | 21. K5-1520 Harms-Colibri Forceps, 0.12mm |
| 6. K1-5698 Double-X Speculum, solid blade 15mm | 22. K5-5220 Tennant Tying Forceps, straight |
| 7. K5-9900 Hartmann Mosquito Forceps, straight (2) | 23. K5-5230 Tennant Tying Forceps, curved |
| 8. K5-9850 Serrefine, small, straight (2) | 24. K3-4255 Paton Spatula & Spoon |
| 9. K4-2017 Terry Micro Corneal Scissors, left | 25. K6-3820 Katena Needle Holder, curved w/lock |
| 10. K4-2016 Terry Micro Corneal Scissors, right | 26. K6-1520 Castroviejo Needle Holder, curved w/lock |
| 11. K4-3004 Westcott Tenotomy Scissors | 27. K4-4200 Katena Micro Tying Scissors |
| 12. K4-4150 Jaffe Stitch Scissors | 28. K7-3500 Air Injection Cannula, 30ga. |
| 13. K20-2056 Barron Vacuum Trephine, 7.5mm | 29. K7-5150 McIntyre A/C Cannula, 26ga. |
| 14. *K20-2058 Barron Vacuum Trephine, 8.0mm | 30. *K9-2350 Sterilizing Case, double, aluminum |
| 15. K20-2108 Barron Vacuum Punch, 8.0mm | 31. *K20-5010 K-Sponge II spears, synthetic (bx) |
| 16. *K20-2110 Barron Vacuum Punch, 8.5mm | |

*not shown

DALK Set

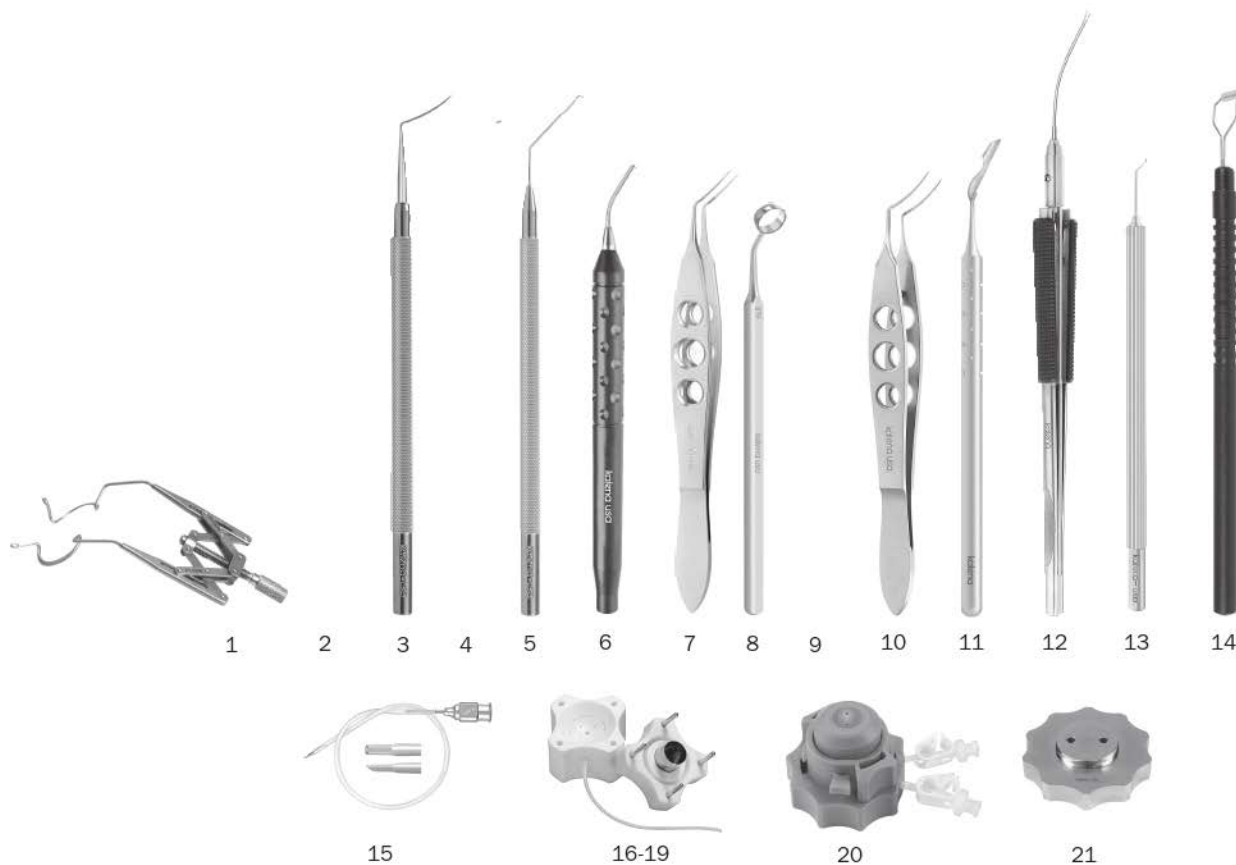


K10-2032 • DEEP ANTERIOR LAMELLAR KERATOPLASTY (DALK) SET

1. **K1-5691** Double-X Speculum, K-Wire, 15mm blades
2. **K3-1870** DALK Corneal Dissector
3. **K3-1875** Rosenwasser DALK Trisector
4. **K3-1877** Bonfadini DALK Spatula
5. **K4-2019** Holland DALK Scissors, left
6. **K4-2018** Holland DALK Scissors, right
7. **K4-5075** Holland DALK Scissors, angled, blunt
8. **K7-3590** DALK Air Injection Cannula, 27ga.
9. **K7-3595** Rosenwasser DALK Cannula, 27ga.
10. **K5-5220** Tennant Tying Forceps, delicate, straight
11. **K5-5230** Tennant Tying Forceps, delicate, curved
12. **K6-3830** Katena Needle Holder, extra-delicate, curved
13. **K4-4200** Katena Micro Tying Scissors
14. **K20-2058** Barron Radial Vacuum Trephine, 8.0mm
- 15.***K9-2330** Sterilizing Case, medium, aluminum

*not shown

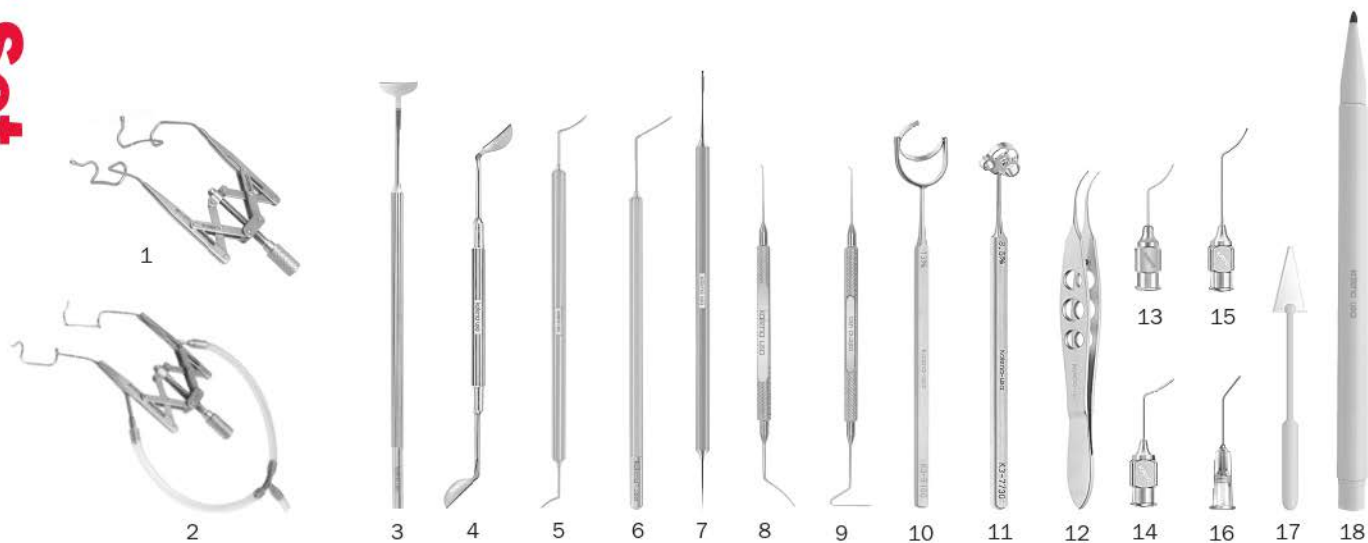
Endothelial Transplant Set



K10-2033 • ENDOTHELIAL TRANSPLANTATION SET

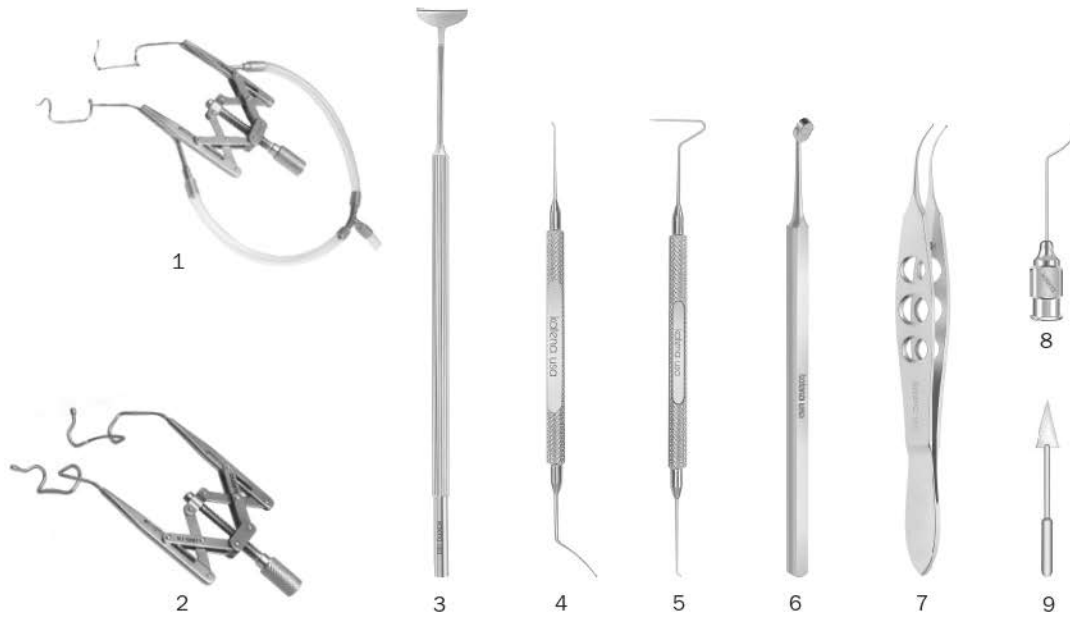
- | | |
|--|---|
| 1. K1-5697 Double-X Speculum, 13mm blades | 12. K5-7550 DSEK Grasping Forceps, 23ga. |
| 2. K2-3660 Corneal Dissector, straight | 13. K3-1880 Rootman-Goldich DMEK Dissector |
| 3. K2-3661 Corneal Dissector, vaulted | 14. K20-3845 Rubenstein Corneal Roller, sterile (pk/3) |
| 4. K3-5002 Reversed Sinskey Hook | 15. K7-6717 Dahan-Blumenthal A/C Maintainer |
| 5. K3-1830 Endothelial Stripper | 16. K20-2110 Barron Vacuum Punch, 8.5mm |
| 6. K7-5897 Rosenwasser Irrigating Endothelial Stripper | 17. * K20-2111 Barron Vacuum Punch, 8.75mm |
| 7. K5-5095 Florakis Endothelial Forceps | 18. * K20-2112 Barron Vacuum Punch, 9.0mm |
| 8. K3-8154 Bores Optic Zone Marker, 9.0mm | 19. * K20-2114 Barron Vacuum Punch, 9.5mm |
| 9. K3-4263 Rosenwasser Donor Lamellar Inserting Shovel | 20. K20-2125 Barron Artificial Anterior Chamber |
| 10. K5-8010 Rosenwasser Donor Lamella Inserting Forceps | 21. * K20-2126 Barron Stainless Steel Base |
| 11. K3-4270 Endothelial Glide Spatula | 22. * K9-2340 Instrument Case, large, aluminum
*not shown |

LASIK Set



K10-2035 • LASIK SET

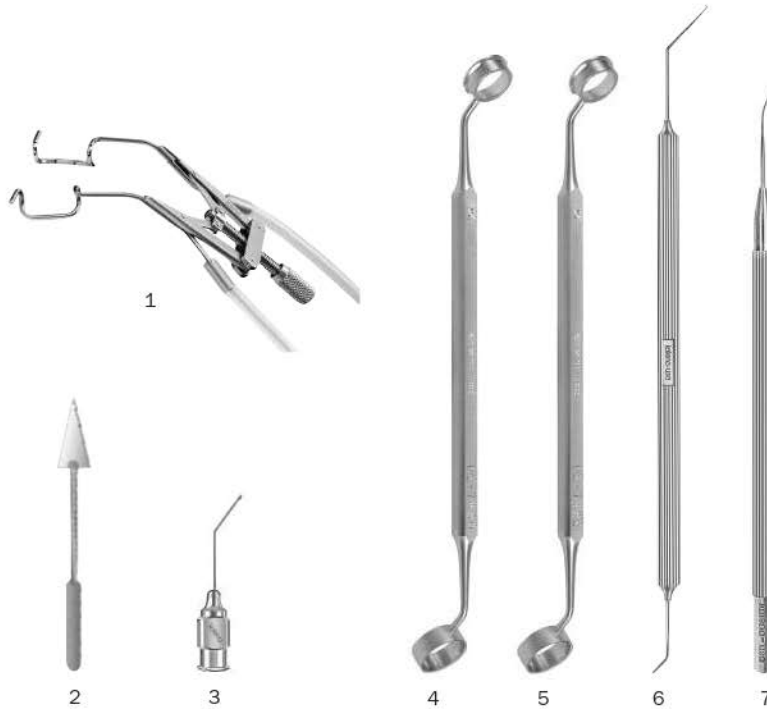
- | | | | |
|--------------------|---|---------------------|--|
| 1. K1-5691 | Double-X Speculum, K-Wire, 15mm blades | 11. K3-7730 | Chayet Corneal Marker |
| 2. K1-5191 | Double-X Aspirating Speculum (optional) | 12. K5-5058 | Buratto LASIK Flap Forceps |
| 3. K3-1770 | Buratto Flap Protector | 13. K7-5112 | Banaji LASIK Cannula, 26ga. |
| 4. K3-1773 | Mannis-Buratto Flap Protector | 14. K7-5106 | Spatulated LASIK Cannula, 26ga. |
| 5. K3-2526 | Hersh LASIK Spatula | 15. K7-5118 | Buratto LASIK Cannula, 3-ports, 23ga. |
| 6. K3-2530 | Fukasaku LASIK Spatula | 16. K20-3151 | John IntraLasik Cannula, sterile (pk/10) |
| 7. K3-2534 | Katzen LASIK Flap Unzipper | 17. K20-5010 | K-Sponge II spears, synthetic (bx) |
| 8. K3-2537 | Thorlakson Z-LASIK™ Flap Lifter | 18. K20-4500 | Marking Pen, standard (pk/10) |
| 9. K3-2538 | IntraLase® Flap Lifter, D-E | 19. *K9-2340 | Instrument Case, large, aluminum
*not shown |
| 10. K3-6160 | Gimbel Stabilization Ring | | |



K10-2036 • FEMTOSECOND LASIK SET

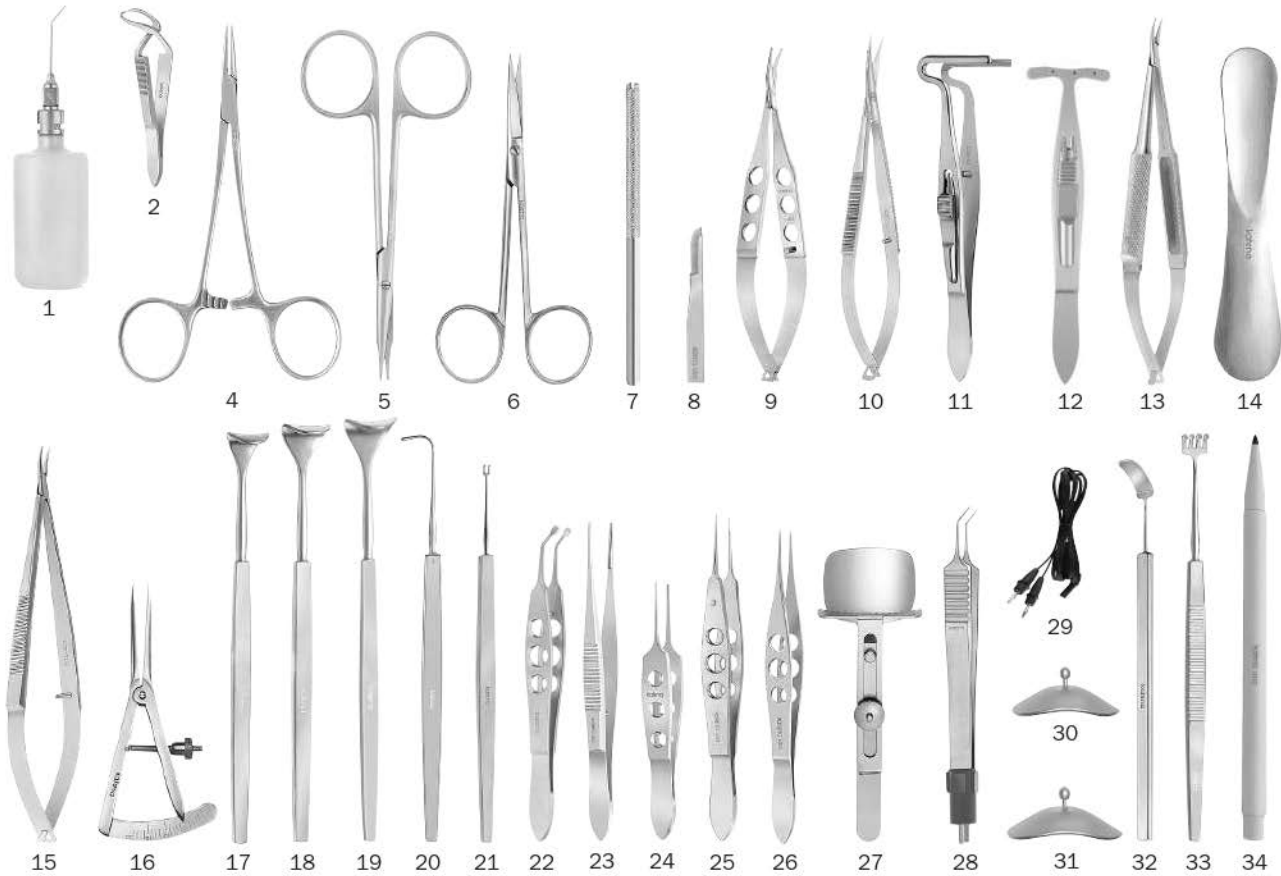
1. **K1-5191** Double-X Aspirating Speculum
 2. **K1-5691** Double-X Speculum, K-Wire, 15mm blades
 3. **K3-1770** Buratto LASIK Flap Protector
 4. **K3-2537** Thorlakson Z-LASIK™ Flap Lifter, short handle
 5. **K3-2538** IntraLase® Flap Lifter, D-E
 6. **K3-7737** Dulaney Corneal Marker
 7. **K5-5058** Buratto LASIK Flap Forceps
 8. **K7-5118** Buratto LASIK Cannula, 23ga.
 9. **K20-5010** K-Sponge II Spears, synthetic (bx)
 10. ***K9-2320** Instrument Case, small, aluminum
- *not shown

LASEK Set



K10-1037 • LASEK SET

- | | | | |
|--------------------|-------------------------------|--------------------|---|
| 1. K1-5171 | Lieberman Aspirating Speculum | 5. K2-7832 | Trephine & Well 9/9.5mm |
| 2. K20-5010 | K-Sponge II, synthetic (bx) | 6. K3-1848 | Micro-Hoe & Epi-Peeler |
| 3. K7-3805 | Alcohol Cannula | 7. K3-1855 | Flap Repositor |
| 4. K2-7830 | Trephine & Well 8/8.5mm | 8. *K9-2320 | Instrument Case, small, aluminum
* not shown |

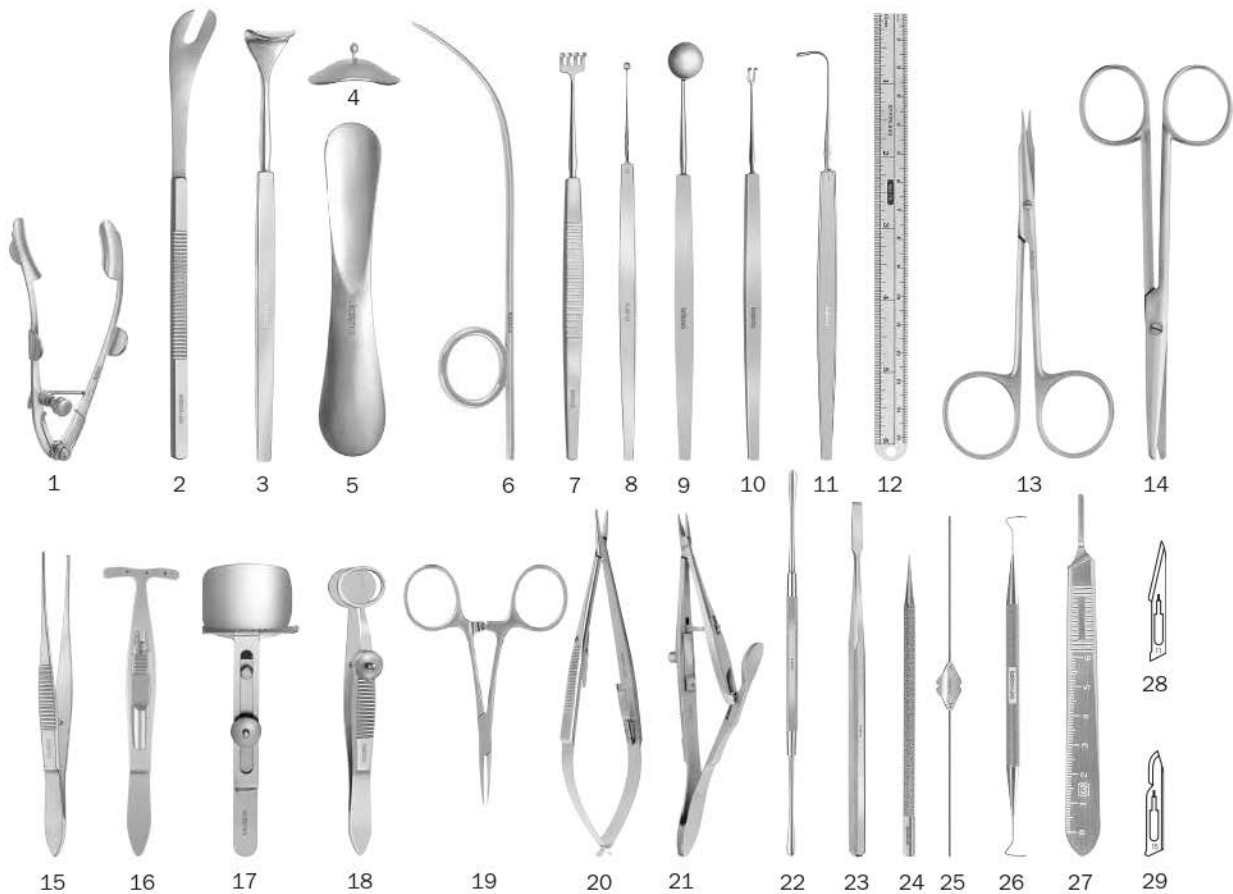


K10-1040 • LID SET

- | | |
|--|---|
| 1. K7-5000 Bishop-Harmon A/C Irrigator | 19. K1-8230 Desmarres Lid Retractor #3 |
| 2. K5-9960 Jones Towel Clamp, 2¼" | 20. K3-6720 Graefe Muscle Hook #2 |
| 3. * K5-9950 Halsted Mosquito Forceps, curved (2) | 21. K3-6000 Fixation Hook, double |
| 4. K5-9940 Halsted Mosquito Forceps, straight | 22. K5-5900 Arita Meibomian Gland Compressor |
| 5. K4-8500 Stevens Scissors, straight | 23. K5-6200 Bonaccolto Conjunctiva Forceps |
| 6. K4-7400 Eye Scissors, straight | 24. K5-3510 Bishop-Harmon Forceps |
| 7. K20-1910 Chuck Handle | 25. K5-2510 Castroviejo Forceps, 0.3mm |
| 8. K20-2467 Performance Miniature Blade #67 (bx) | 26. K5-5420 Helveston Tying Forceps |
| 9. K4-3004 Westcott Tenotomy Scissors | 27. K5-9410 Downes Lid Clamp |
| 10. K4-4100 Westcott Stitch Scissors | 28. K8-7021 Bipolar Forceps, angled, blunt |
| 11. K5-9310 Berke Ptosis Forceps | 29. K8-7065 Bipolar Cord |
| 12. K5-9315 Ptosis Lid Clamp, 6-pin, concave | 30. K1-8481 Scleral Shield, small, pair |
| 13. K6-3310 Barraquer Needle Holder, curved | 31. K1-8482 Scleral Shield, large, pair |
| 14. K1-8520 Jaeger Lid Plate, stainless steel | 32. K1-9019 Helveston Retractor, concave, 11mm |
| 15. K6-1530 Castroviejo Needle Holder, curved | 33. K1-9001 Knapp Retractor, 4-prong |
| 16. K3-9000 Castroviejo Caliper, straight | 34. K20-4500 Marking Pen, (pk/10) |
| 17. K1-8210 Desmarres Lid Retractor #1 | 35. * K9-2350 Sterilizing Case, double, aluminum |
| 18. K1-8220 Desmarres Lid Retractor #2 | |

* not shown

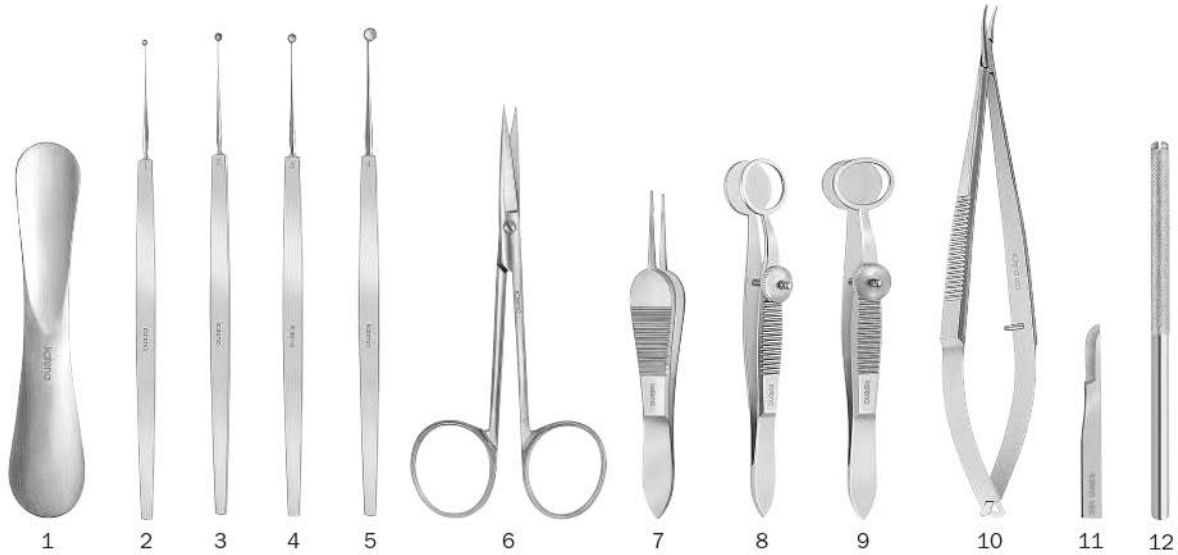
Oculoplastic Set



K10-1043 • OCULOPLASTIC SET

- | | | | |
|--------------------|--------------------------------------|---------------------|---|
| 1. K1-5620 | Lester-Burch Eye Speculum | 16. K5-9315 | Ptosis Lid Clamp, 6-pin, concave |
| 2. K1-7880 | Schepens Orbital Retractor | 17. K5-9410 | Downes Lid Clamp |
| 3. K1-8220 | Desmarres Lid Retractor #2 | 18. K5-9600 | Francis Chalazion Forceps |
| 4. K1-8482 | Scleral Shield, large (pair) | 19. K5-9900 | Hartmann Mosquito Forceps, straight (2) |
| 5. K1-8520 | Jaeger Lid Plate, stainless steel | 20. K6-1560 | Castroviejo Needle Holder, straight with lock |
| 6. K1-8540 | Wright Fascia Needle | 21. K6-1800 | Kalt Needle Holder |
| 7. K1-9000 | Knapp Retractor, 4-prong, blunt | 22. K7-1830 | Freer Periosteal Elevator |
| 8. K3-1030 | Meyerhoefer Curette #3 | 23. K7-1840 | West Lacrimal Chisel, straight |
| 9. K3-4410 | Bunge Evisceration Spoon | 24. K7-2120 | Wilder Lacrimal Dilator #2 |
| 10. K3-6010 | Fixation Hook, double, large | 25. K7-2540 | Bowman Lacrimal Probe #3-4 |
| 11. K3-6720 | Graefe Muscle Hook | 26. K7-2900 | Pigtail Probe |
| 12. K3-9200 | Stainless Steel Ruler | 27. K20-1950 | Bard-Parker Handle |
| 13. K4-8500 | Stevens Scissors, straight | 28. K20-1981 | Bard-Parker Blade #11 |
| 14. K4-9910 | Enucleation Scissors, medium, curved | 29. K20-1985 | Bard-Parker Blade #15 |
| 15. K5-4140 | Tissue Forceps, 1x2, straight | 30* K9-2350 | Sterilizing Case, double, aluminum |

* not shown

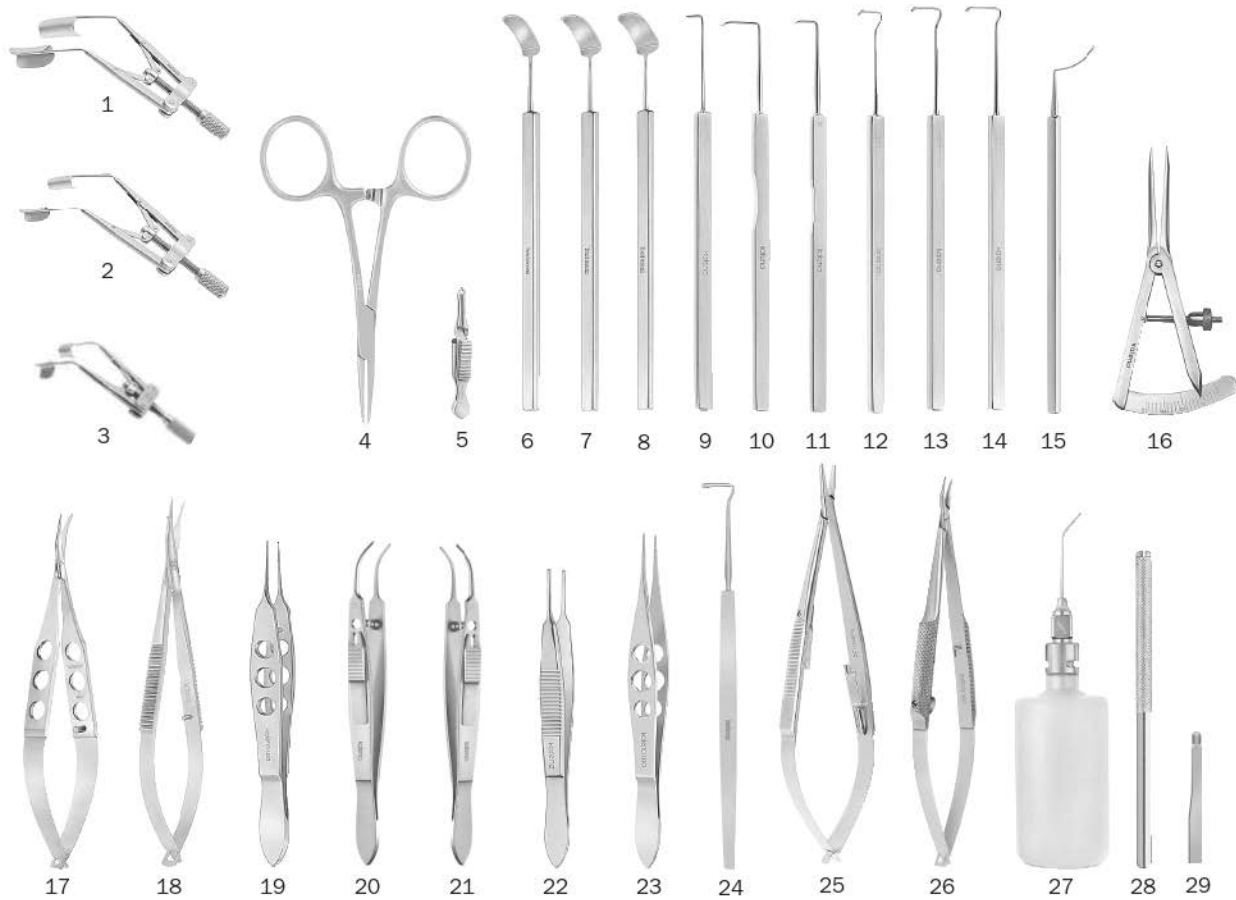


K10-1045 • CHALAZION SET

1. **K1-8520** Jaeger Lid Plate, stainless steel
2. **K3-1010** Meyerhoefer Curette #1
3. **K3-1020** Meyerhoefer Curette #2
4. **K3-1030** Meyerhoefer Curette #3
5. **K3-1040** Meyerhoefer Curette #4
6. **K4-7410** Eye Scissors, curved
7. **K5-3562** Manhattan Eye & Ear Suture Forceps
8. **K5-9500** Hunt Chalazion Forceps
9. **K5-9600** Francis Chalazion Forceps
10. **K6-1530** Castroviejo Needle Holder, curved
11. **K20-2467** Performance Miniature Blade #67 (bx)
12. **K20-1910** Chuck Handle
13. ***K9-2030** Sterilizing Case, large, plastic

* not shown

Strabismus Set

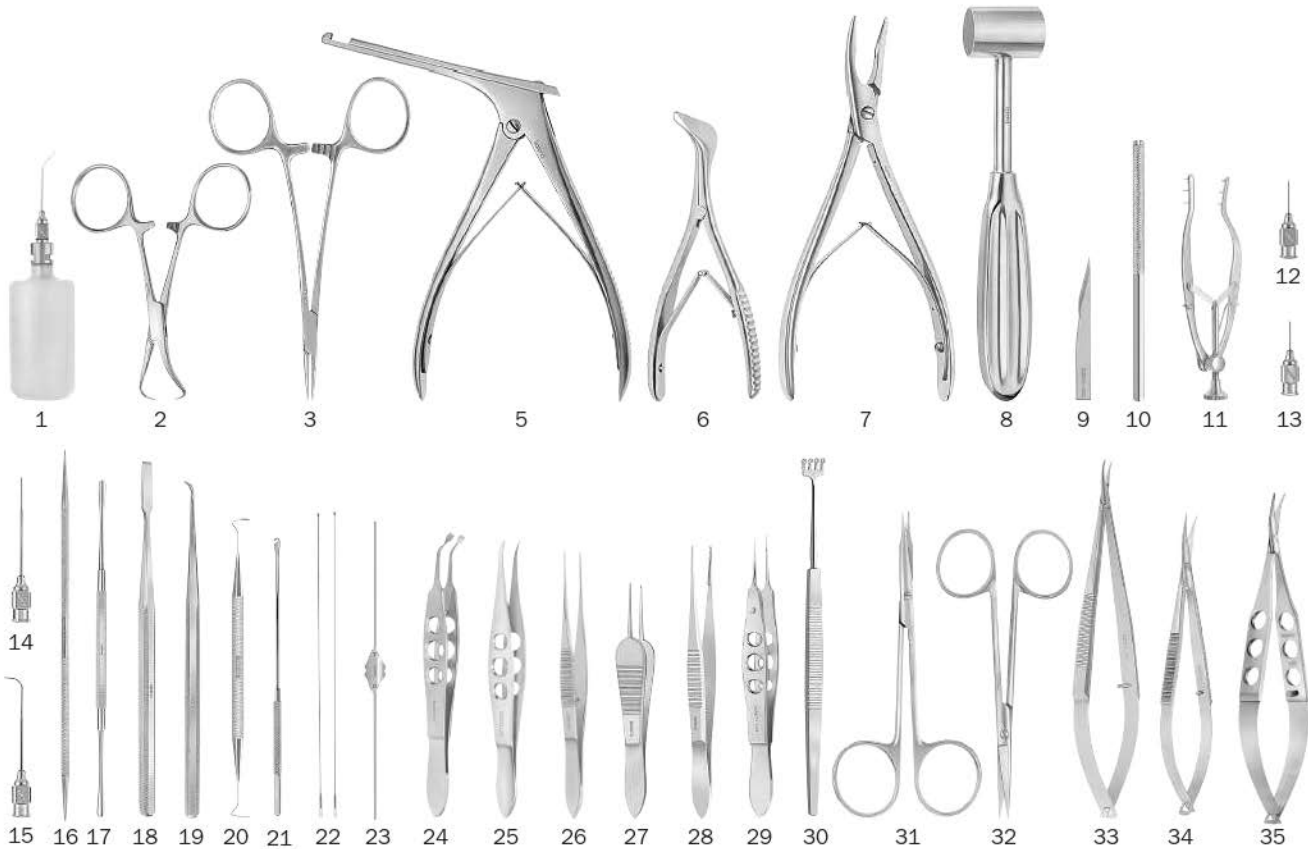


K10-2050 • STRABISMUS SET

- | | | | |
|--------------------|--|---------------------|---|
| 1. K1-5678 | Lieberman Speculum, solid blade, large | 16. K3-9000 | Castroviejo Caliper, straight |
| 2. K1-5677 | Lieberman Speculum, solid blade, small | 17. K4-3004 | Westcott Tenotomy Scissors |
| 3. K1-5665 | Lieberman Infant Speculum, solid blade | 18. K4-4100 | Westcott Stitch Scissors |
| 4. K5-9910 | Hartmann Mosquito Forceps, curved (2) | 19. K5-2020 | Bonn Forceps, 0.12mm |
| 5. K5-9850 | Serrefine, small, straight (2) | 20. K5-2553 | Moody Fixation Forceps, left |
| 6. K1-9010 | Helveston "Barbie" Retractor | 21. K5-2554 | Moody Fixation Forceps, right |
| 7. K1-9012 | Helveston "Big Barbie" Retractor | 22. K5-4320 | Lester Fixation Forceps, 2x3 (3) |
| 8. K1-9019 | Helveston "Great Big Barbie" Retractor | 23. K5-5420 | Helveston Tying Forceps (2) |
| 9. K3-6610 | Helveston Teaser Hook, 6mm (3) | 24. K3-6830 | Rychwalski Muscle Hook, with grooves |
| 10. K3-6760 | Helveston Finder Hook, large | 25. K6-1560 | Castroviejo Needle Holder, straight, w/lock |
| 11. K3-6761 | Helveston Finder Hook, small | 26. K6-3520 | Barraquer Needle Holder, curved, w/lock |
| 12. K3-6778 | Helveston Muscle Hook, 8mm | 27. K7-5000 | Bishop-Hammon A/C Irrigator |
| 13. K3-6780 | Helveston Muscle Hook, 10mm | 28. K20-1910 | Chuck Handle |
| 14. K3-6782 | Helveston Muscle Hook, 12mm | 29. K20-2469 | Performance Miniature Blade #69 (bx) |
| 15. K3-9030 | Helveston Scleral Ruler | 30. *K9-2350 | Sterilizing Case, double, aluminum |

*not shown

Technique Video Available

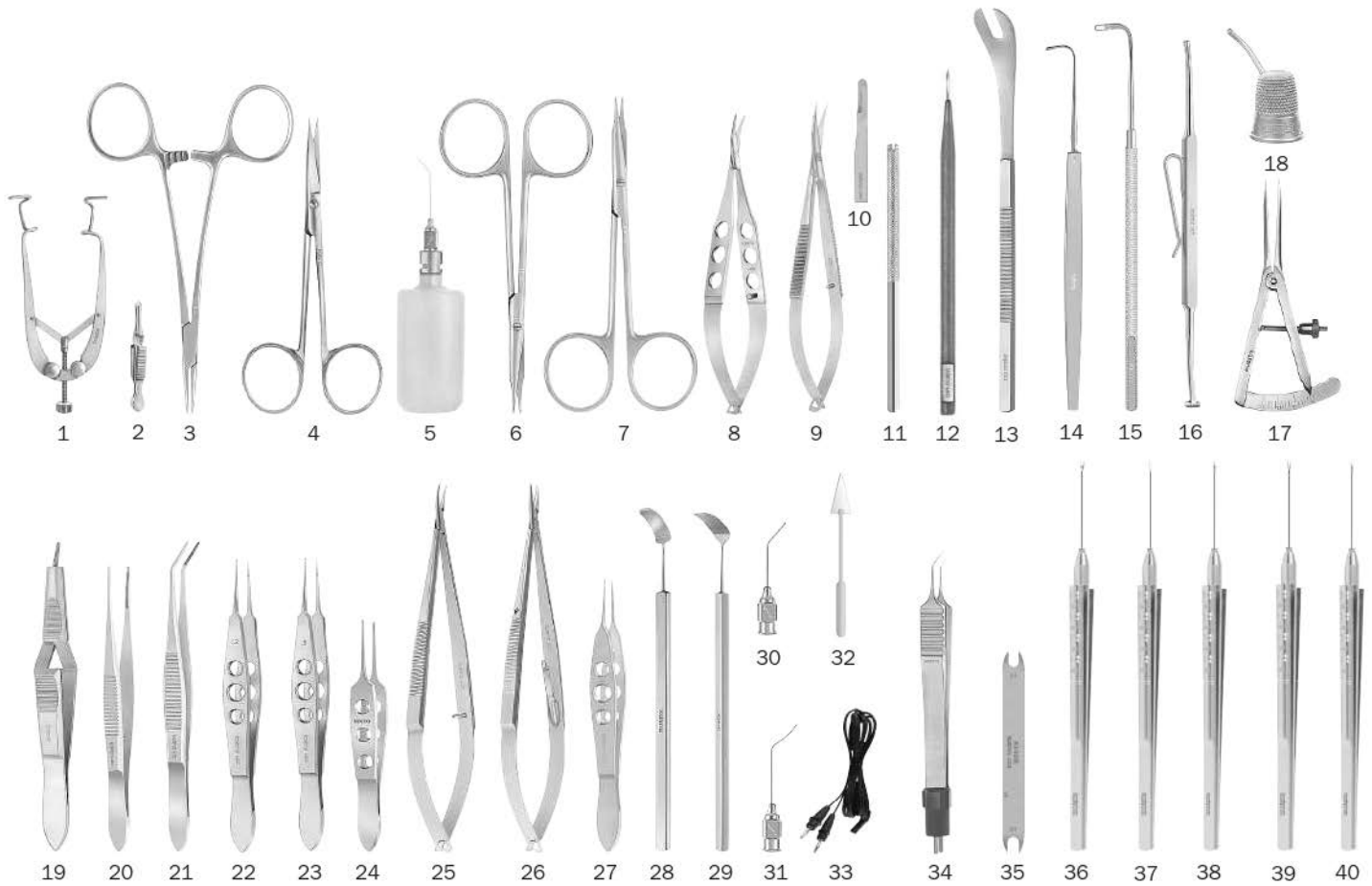


K10-1055 • LACRIMAL SET

- | | |
|--|---|
| 1. K7-5000 Bishop-Harmon A/C Irrigator | 20. K7-2900 Pigtail Probe |
| 2. K5-9964 Backhaus Towel Clamp (2) | 21. K7-2623 Crawford Retrieving Hook |
| 3. K5-9940 Halsted Mosquito Forceps, straight (2) | 22. K7-2620 Crawford Lacrimal Intubation Set |
| 4. * K5-9950 Halsted Mosquito Forceps, curved (2) | 23. K7-2500 Bowman Lacrimal Probe Set of 6 |
| 5. K7-1801 Kerrison Rongeur, size 1 | 24. K5-5900 Arita Meibomian Gland Compressor |
| 6. K7-1822 Nasal Speculum, adult | 25. K5-6218 Gold Punctal Plug Forceps |
| 7. K7-1810 Beyer Rongeur | 26. K5-4000 Dressing Forceps, delicate, straight |
| 8. K7-1860 Mallet, lead filled stainless steel | 27. K5-3560 Sauer Fixation Forceps, 1x2 |
| 9. K20-2465 Performance Miniature Blade #65 (bx) | 28. K5-6210 Bonaccolto Conjunctiva Forceps |
| 10. K20-1910 Chuck Handle | 29. K5-2510 Castroviejo Forceps, 0.3mm |
| 11. K1-9500 Stevenson Retractor | 30. K1-9000 Knapp Retractor, 4-prong, blunt (2) |
| 12. K7-3014 Shahinian Lacrimal Cannula | 31. K4-8510 Stevens Scissors, curved |
| 13. K7-3016 Burnstine Lacrimal Cannula | 32. K4-7400 Eye Scissors, straight |
| 14. K7-3000 Lacrimal Cannula, straight | 33. K6-1520 Castroviejo Needle Holder, curved w/lock |
| 15. K7-3010 Lacrimal Cannula, curved | 34. K4-4100 Westcott Stitch Scissors |
| 16. K7-2300 Castroviejo Lacrimal Dilator | 35. K4-3130 Tibolt Punctal Scissors |
| 17. K7-1830 Freer Periosteal Elevator | 36. * K20-5000 K-Sponge Spears, sterile (bx) |
| 18. K7-1840 West Lacrimal Chisel, straight | 37. * K9-2350 Sterilizing Case, double, aluminum |
| 19. K7-1845 Freer Lacrimal Chisel, curved | |

*not shown

Vitreoretinal Set



K10-1060 • VITREORETINAL SET, 23 GAUGE

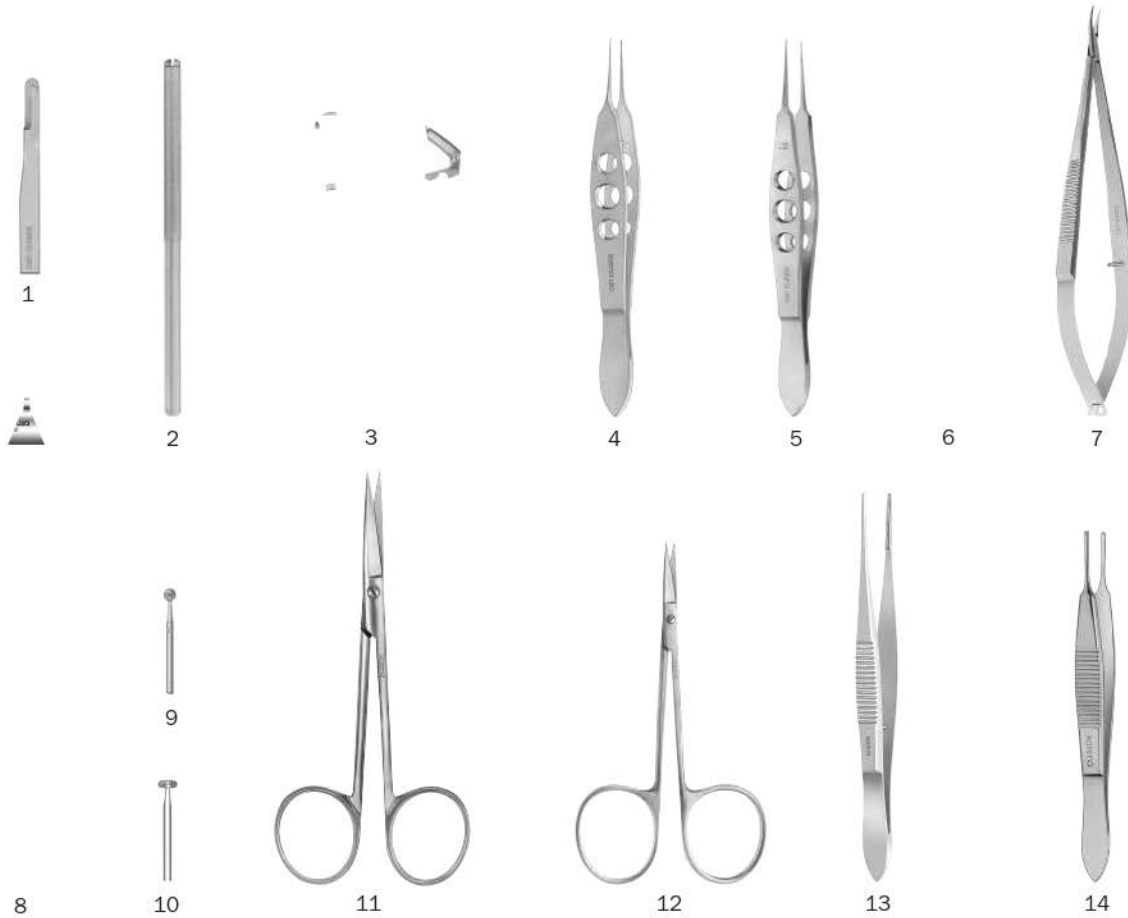
- | | | | |
|---------------------|--|----------------------|--|
| 1. K1-5711 | Fishkind-Castroviejo Speculum | 22. K5-2500 | Castroviejo Forceps, 0.12mm |
| 2. K5-9850 | Serrefine, small, straight (4) | 23. K5-2510 | Castroviejo Forceps, 0.3mm |
| 3. K5-9940 | Halsted Mosquito Forceps, straight (2) | 24. K5-3510 | Bishop-Harmon Forceps (2) |
| 4. K4-7400 | Eye Scissors, straight | 25. K6-1520 | Castroviejo Needle Holder, curved, w/lock |
| 5. K7-5000 | Bishop-Harmon A/C Irrigator | 26. K6-1500 | Castroviejo Needle Holder, straight |
| 6. K4-8500 | Stevens Scissors, straight | 27. K5-5000 | McPherson Tying Forceps, straight |
| 7. K4-8510 | Stevens Scissors, curved | 28. K1-9010 | Helveston Barbie Retractor |
| 8. K4-3004 | Westcott Tenotomy Scissors | 29. K1-9019 | Helveston Retractor, concave, 11mm |
| 9. K4-4100 | Westcott Stitch Scissors | 30. K7-3550 | Viscoelastic Aspiration Cannula, 22ga. |
| 10. K20-2464 | Miniature Blade #64 (bx) | 31. K7-3620 | Randolph Cyclodialysis Cannula, 19ga. |
| 11. K20-1910 | Chuck Handle | 32. K20-5000 | K-Sponge Spears (bx) |
| 12. K20-2286 | MVR Knife, 1.5mm, 19 gauge | 33. K8-7065 | Bipolar Cord |
| 13. K1-7880 | Schepens Orbital Retractor | 34. K8-7021 | Bipolar Forceps, angled, blunt |
| 14. K3-6720 | Graefe Muscle Hook #2 | 35. K3-9250 | Braunstein Caliper, 3.5/4.0mm |
| 15. K3-6740 | Gass Retinal Detachment Hook | 36. K4-5423 | Squeeze Handle Scissors, horizontal, curved, 23ga. |
| 16. K1-7825 | Schocket Scleral Depressor | 37. K5-7703 | Squeeze Handle Forceps, serrated jaws, 23ga. |
| 17. K3-9000 | Castroviejo Caliper, straight | 38. K5-7713 | Squeeze Handle Forceps, end gripping, 23ga. |
| 18. K1-7790 | Gass Scleral Marker | 39. K5-7723 | Squeeze Handle Forceps, asymmetrical, 23ga. |
| 19. K5-7950 | Watzke Sleeve Spreading Forceps | 40. K5-7733 | Squeeze Handle Forceps, ILM, 23ga. |
| 20. K5-6200 | Bonaccolto Conjunctiva Forceps | 41. * K9-2350 | Sterilizing Case, double, aluminum |
| 21. K5-6215 | Nugent Utility Forceps, serrated | | * not shown |



K10-1065 • ENUCLEATION SET

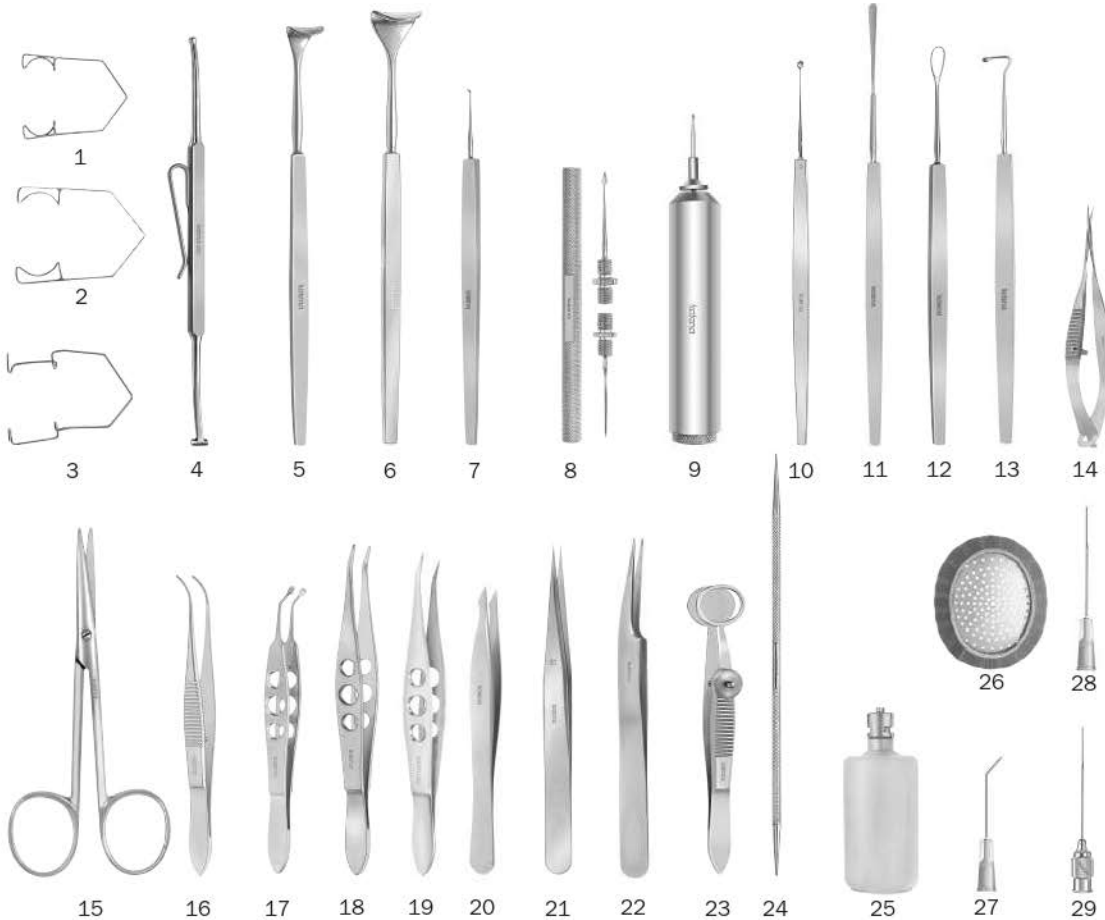
1. **K1-5620** Lester-Burch Eye Speculum
2. **K3-4410** Bunge Evisceration Spoon, large
3. **K3-4400** Bunge Evisceration Spoon, small
4. **K3-4450** Wells Enucleation Spoon
5. **K3-6720** Graefe Muscle Hook #2
6. **K4-8500** Stevens Scissors, straight
7. **K4-9920** Enucleation Scissors, strong curve
8. **K5-4140** Tissue Forceps
9. **K5-9950** Halsted Mosquito Forceps, curved
10. ***K9-2030** Sterilizing Case, large, plastic
* not shown

Pterygium Set



K10-1070 • PTERYGIUM SET

- | | |
|---|---|
| 1. K20-2464 Miniature Blade #64, disposable (bx) | 8. K2-4920 Katena Ophthalmic Burr |
| 2. K20-1910 Chuck Handle | 9. K2-4925 Diamond Burr, 5.0mm diameter ball |
| 3. K1-5600 Lancaster Eye Speculum | 10. K2-4935 Diamond Burr, 5.0mm diameter disc |
| 4. K5-5000 McPherson Tying Forceps, straight | 11. K4-7400 Eye Scissors, straight, standard |
| 5. K5-2500 Castroviejo Forceps, 0.12mm | 12. K4-7200 Eye Scissors, straight, small |
| 6. K2-3700 Gill Corneal Knife | 13. K5-6200 Bonaccolto Conjunctiva Forceps |
| 7. K6-1530 Castroviejo Needle Holder, curved | 14. K5-4320 Lester Fixation Forceps |
| | 15. *K9-2030 Sterilization Case, large, plastic
* not shown |

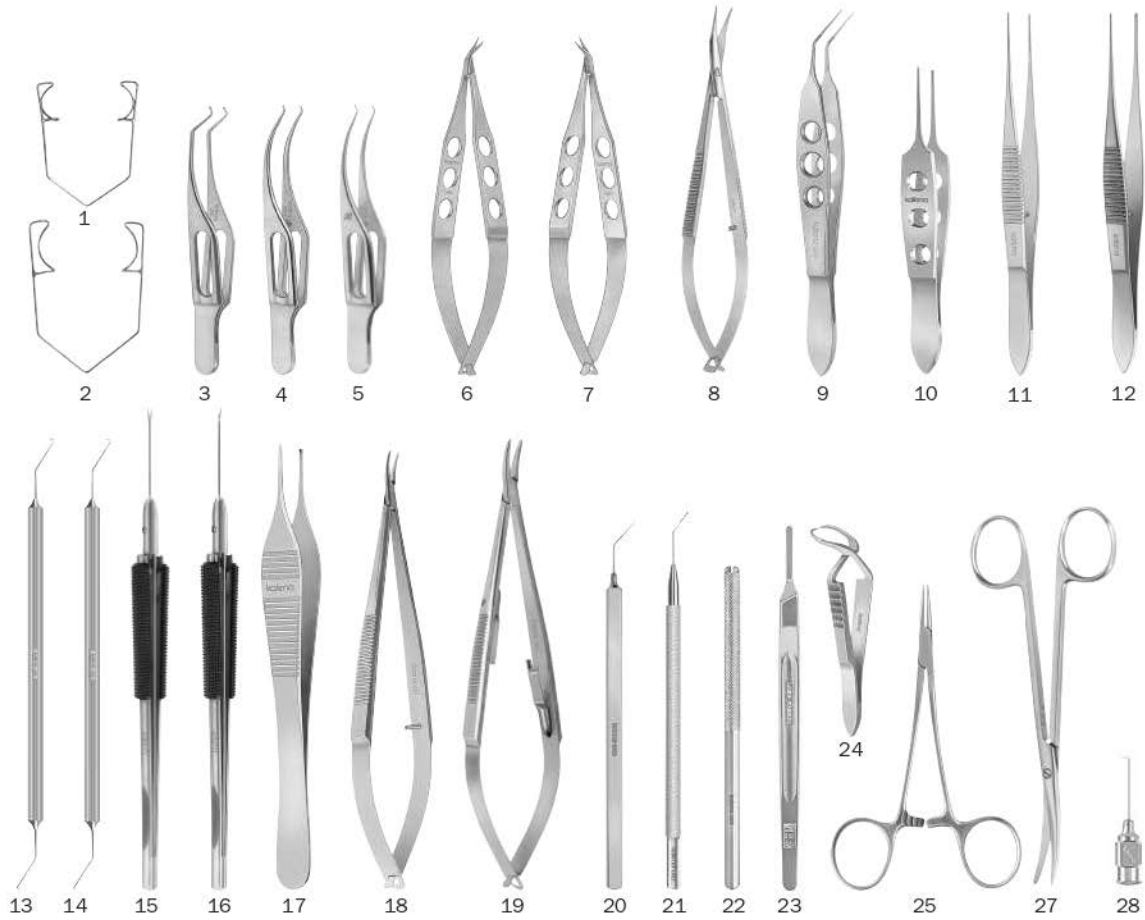


K10-1080 • OFFICE SET

- | | |
|---|--|
| 1. K1-5000 Barraquer Wire Speculum, 10mm blades | 16. K5-4010 Dressing Forceps, curved |
| 2. K1-5010 Barraquer Wire Speculum, 15mm blades | 17. K5-5900 Arita Meibomian Gland Compressor |
| 3. K1-5050 Kratz-Barraquer Wire Speculum, 15mm blades | 18. K5-6000 Barraquer Cilia Forceps, lightly angled |
| 4. K1-7825 Schocket Scleral Depressor | 19. K5-6218 Gold Punctal Plug Forceps |
| 5. K1-8200 Desmarres Lid Retractor, size 0, 11mm wide | 20. K5-6020 Katena Cilia Forceps |
| 6. K1-8220 Desmarres Lid Retractor, size 2, 15mm wide | 21. K5-6520 Jewelers Forceps, delicate, straight |
| 7. K2-4000 Golf Club Foreign Body Spud | 22. K5-6575 Suture Removal Forceps |
| 8. K2-4600 Spud & Gouge, in reversible handle | 23. K5-9600 Francis Chalazion Forceps, oval |
| 9. K2-4900 Algerbrush II, complete with "AA" battery and two burrs | 24. K7-2300 Castroviejo Lacrimal Dilator, double-end |
| 10. K3-1030 Meyerhoefer Chalazion Curette, size 3, 2.5mm dia. | 25. K7-5005 Bishop-Harmon A/C Irrigator |
| 11. K3-3500 Kimura Platinum Spatula | 26. K9-6010 Fox Aluminum Eye Shield, adult |
| 12. K3-4030 New Orleans Lens Loop | 27. K20-3142 Bishop-Harmon Cannula, 19ga., sterile, disp. (bx/10) |
| 13. K3-6800 Jameson Muscle Hook, small | 28. K20-3280 Lacrimal Cannula, 19ga., sterile, disp. (bx/10) |
| 14. K4-5100 McPherson-Vannas Iris Scissors, curved | 29. K7-3000 Lacrimal Cannula, 23ga. straight |
| 15. K4-9000 Knapp Stabismus Scissors, straight | 30.* K9-2350 Sterilizing Case, double, aluminum |

* not shown

Veterinary Ophthalmic Set



K10-1090 • VETERINARY OPHTHALMIC SET

- | | | | |
|--------------------|--|---------------------|---|
| 1. K1-5000 | Barraquer Wire Speculum, small | 16. K4-5210 | Intraocular Scissors, angled 30° |
| 2. K1-5010 | Barraquer Wire Speculum, large | 17. K5-4170 | Adson Tissue Forceps |
| 3. K5-1050 | Iris Forceps | 18. K6-1520 | Castroviejo Needle Holder, curved, w/lock |
| 4. K5-1550 | Colibri Forceps, 1x2 teeth, 0.4mm | 19. K6-1580 | Castroviejo Needle Holder, heavy, curved |
| 5. K5-1520 | Harms-Colibri Forceps, 0.12mm | 20. K3-5230 | Sinsky Lens Hook, angled |
| 6. K4-1000 | Castroviejo Corneal Scissors, small, right | 21. K3-2410 | Jaffe-Bechert Rotator, 9mm |
| 7. K4-1010 | Castroviejo Corneal Scissors, small, left | 22. K20-1910 | Chuck Handle (2) |
| 8. K4-3100 | Westcott Tenotomy Scissors | 23. K20-1970 | Bard-Parker Handle |
| 9. K5-5081 | Utrata Capsulorrhexis Forceps | 24. K5-9960 | Jones Towel Clamp (4) |
| 10. K5-3510 | Bishop-Harmon Forceps | 25. K5-9940 | Halsted Mosquito Forceps, straight (2) |
| 11. K5-4000 | Dressing Forceps, delicate, straight | 26. K5-9950 | Halsted Mosquito Forceps, curved (2) |
| 12. K5-4100 | Tissue Forceps, delicate, straight | 27. K4-9040 | Metzenbaum Dissecting Scissors |
| 13. K3-2369 | Chang Phaco Chopper | 28. K7-5464 | Chang Hydrodissection Cannula |
| 14. K3-2379 | Warren Canine Phaco Chopper | 29. K9-2350 | Instrument Case, double, aluminum |
| 15. K4-5200 | Intraocular Scissors, straight | | *not shown |